

SPECTRUM



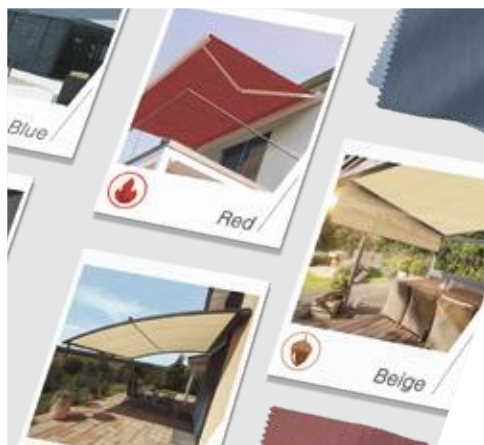
Experience new diversity

SPECTRUM awning
collection

Der SonnenLichtManager

SPECTRUM

The awning collection comprises a number of colours and designs. In a total of six WAREMA Colour Worlds, you will find the latest trend colours.



The new collection

Sustainable, natural and trendsetting. WAREMA offers an impressive holistic range of innovative fabric qualities and attractive WAREMA Colour Worlds: SPECTRUM.

| | |
|------------------------------------|----|
| The WAREMA Trend and Colour Worlds | 04 |
|------------------------------------|----|

| | |
|---------------------------------|----|
| SPECTRUM acrylic fabric quality | 12 |
|---------------------------------|----|

| | |
|--|----|
| SPECTRUM ⁺ functional fabrics | 24 |
|--|----|

| | |
|------------------------|----|
| Fabric characteristics | 32 |
|------------------------|----|

| | |
|------------|----|
| Production | 38 |
|------------|----|

| | |
|----------------------------|----|
| Vertical shading solutions | 40 |
|----------------------------|----|

| | |
|--------------------------|----|
| Accessories and features | 42 |
|--------------------------|----|



New outdoor living

Experience outdoor space with innovation

True to a modern lifestyle, space outdoors is increasingly becoming the focal point of our life and the patio somewhere to meet people and rejuvenate ourselves. Spending time amongst nature helps to slow body and mind and guides people towards a thoughtful, healthy and sustainable lifestyle.

A healthy lifestyle is therefore also currently at the top of the agenda when it comes to creating a holistic design for our living space. The most dominant values are authentic ones, values we aspire to in the face of increasing digitalisation and which reflect the pursuit of well-being and a closeness to nature. This increasingly involves a fusion of indoor and outdoor space, creating a liberated, honest and distinctive image of an evolving lifestyle – the awning becoming a link to nature, transforming the patio into a feel-good space with new functions. Innovative, modular and high-grade outdoor kitchens, cosy lounge seating landscapes or a smart multimedia experience are a sign that the former balcony is being transformed into an extension of the living space.



Experience the world with all the senses: Outdoor living is becoming an important part of a holistic lifestyle and changing home decor and architecture.

WAREMA Trends

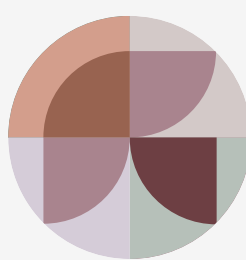
Every trend a world of its own



NATURE



PURE



CREATE

The WAREMA Trend Worlds each captivate with their unique philosophy and are synonymous with individual values and social developments. All trend worlds are united by a love of nature and a sensitive approach to oneself. Three innovative colour palettes symbolise a modern outdoor living feeling and showcase this through fresh design ideas.

NATURE

The new awareness of nature



Important values of our time – authenticity, regionality and tradition – come to light through craftsmanship and ethnological design. The heightened interest in the longevity of products is clear testimony to the fact that we want more security and confidence in our lives. Nature, our role model, is also being perceived more and more consciously – whether through “green living”, a sustainable lifestyle or a natural design language.

The desire for an atmosphere close to nature is reflected through dynamic textures in the fabrics or in soothing shades of green, ranging from fresh ginkgo to vital olive and evoking a sense of wellbeing. Subtle earth tones like sand or ochre give the trend a soft appearance. Intense red earth colours and warm terra shades are lively natural opposites.



TREND COLOUR 1

Vital green tones



TREND COLOUR 2

Soft shades of blue



TREND COLOUR 3

Aubergine to berry

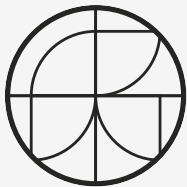
PURE

The desire for peace



We find mental strength and inner peace in a low-key environment where body and mind are able to listen to themselves again. The latest megatrends like “new cocooning” or “healthy living” express a change in self-perception and show us that the topics of self-care and “human design” have evolved in a very sensitive direction.

We strive to grasp the world with all our senses. Our own oasis of tranquility is also becoming increasingly important – we can find this on the patio with a sensitive and scaled-down design. Monochrome textures and delicate colours in shades of grey and beige create elegant minimalism. PURE is synonymous with balance, serenity and lightness and has a meditative and approachable effect thanks to eye-catchers in delicate shades of blue and yellow.



The patio is transformed into a creative retreat amongst nature and radiates an invigorating optimism. A place of encounter, communication and constructive exchange emerges. Increasing globalisation and a new sense of community are impacting our lives and homes – we seek more flexibility and yearn for interaction.

This can be evoked by an open and dynamic design and is reflected in an extravagant, free living ambience. The patio becomes a place that bestows energy and strength through strong colours and progressive contrasts. Lush plant worlds meet a blend of pastel and intense tones that form an exotic combination and create the feeling of a fresh jungle.



CREATE

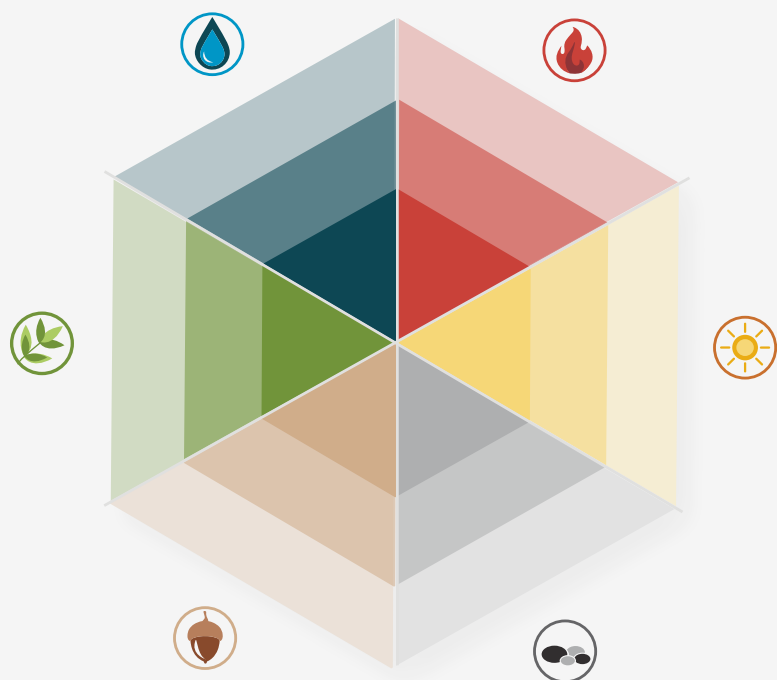
The joy of togetherness



WAREMA Colour Worlds

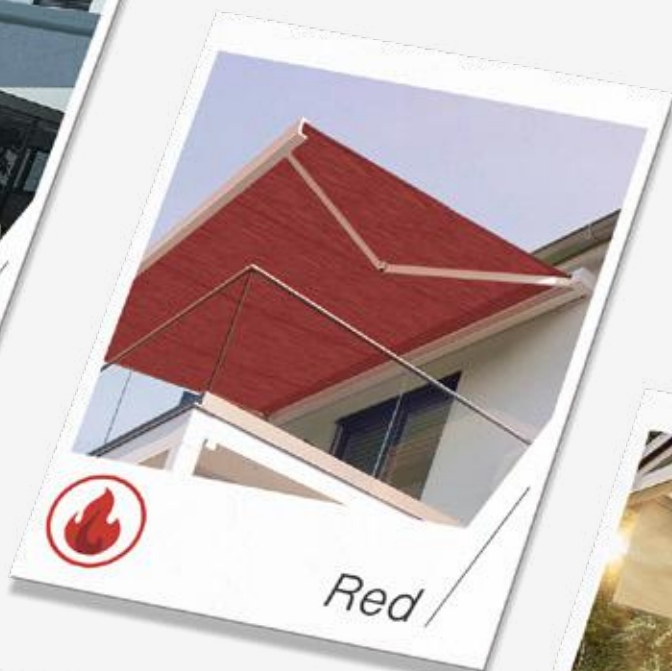
Experience the new diversity!

Inspired by the three trend worlds, the new WAREMA collection presents itself in six sensational colour worlds that cover all areas of the chromatic circle in various brightnesses, intensities and textures. Familiarise yourself with the diverse range of possibilities for your awning! The clear sorting into the colour ranges makes sure you can navigate through the collection quickly and easily and make a careful choice.

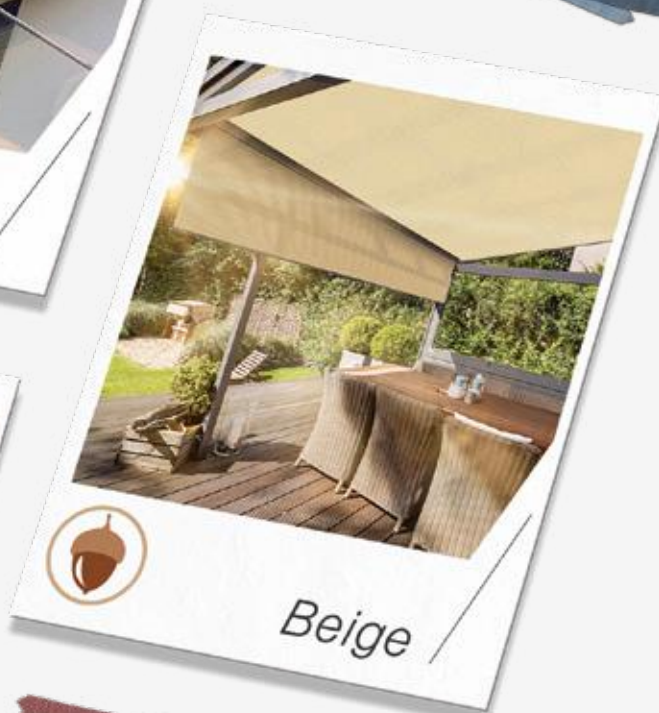




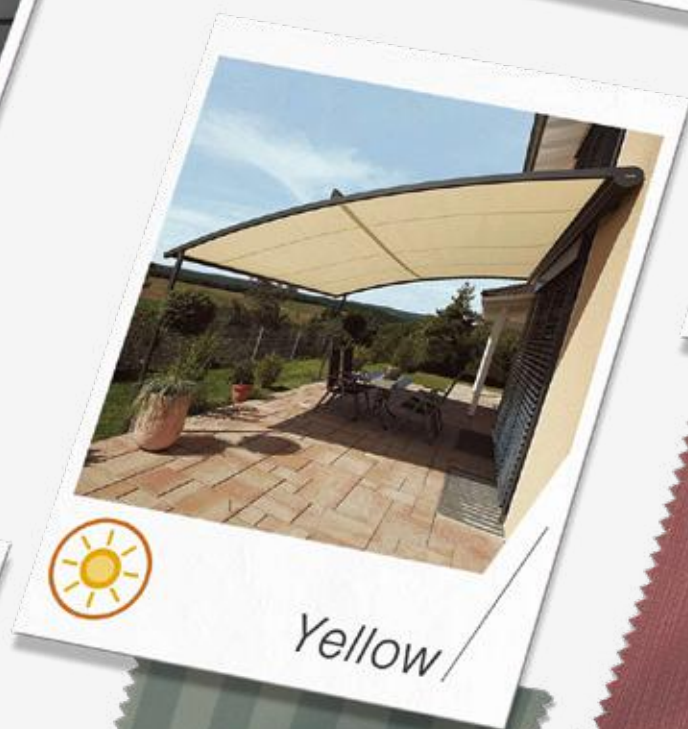
Blue



Red



Beige



Yellow



How colours work

Blue

Confidence, clarity and calm epitomise the individual character of the blue, aqueous colour world.

Dark and cooler shades can have an aquatic effect and radiate elegance, while light pastel shades exude lightness and lend the awning a “heavenly” touch. Elegant petrol creates mystery, encourages reflection and promotes a focused home working atmosphere.



Green

Man is closest to nature with the vital colour green, as it reminds us of leaves, meadows and trees.

Dark, cool shades of green appear classic, elegant and timeless. Soft shades such as sage and olive integrate perfectly into a natural setting. Special tones like matcha or fir help us rejuvenate and lend the patio a touch of wellness.



Beige

The soft and understated beige tones range from light cream to deep, nutty brown. The colours express authenticity and down-to-earthness and turn the patio into a cosy feel-good space.

Light sand and cream shades create a subtle calmness with a natural touch. Especially rosy and yellow hues make the balcony look stylish and inviting. Brown tones radiate nostalgia and pleasure and are reminiscent of earth, leather or wood.



Red

Liveliness, dominance, but also courage and passion are characteristics of the fiery, red colour spectrum.

From red earth tones and intense primordial red to fresh berry hues, this colour can be both elegant and invigorating. The warm tones with the different hues are true masters of metamorphosis and skilful eye-catchers in outdoor design – they exude conviviality and communication by their nature.



Yellow

Vitality and optimism are the main characteristics of the sunny yellow colour group.

Yellow emanates harmony and can be extremely versatile when coordinated with other colours – together with grey, yellow has a modern and young look, teamed with the secondary colour orange, the tone lends the patio a Mediterranean, traditional appearance.



Grey

Grey is everything between black and white – colours with the most diverse shades of all.

The use of warm grey tones lends the patio a natural look, while cool shades create a more sober and architectural atmosphere. The colour tones appear timeless and neutral and are often related to materials like stone, concrete or metal. Deep black looks dominant and serious, white stands for lightness and creates a minimalist mood on the patio.





Benefits at a glance

- ▶ *Reliable UV protection*
- ▶ *Brilliant colours*
- ▶ *Weather-resistant and light-fast*
- ▶ *Especially tear-resistant*
- ▶ *Dirt and water-repellent*



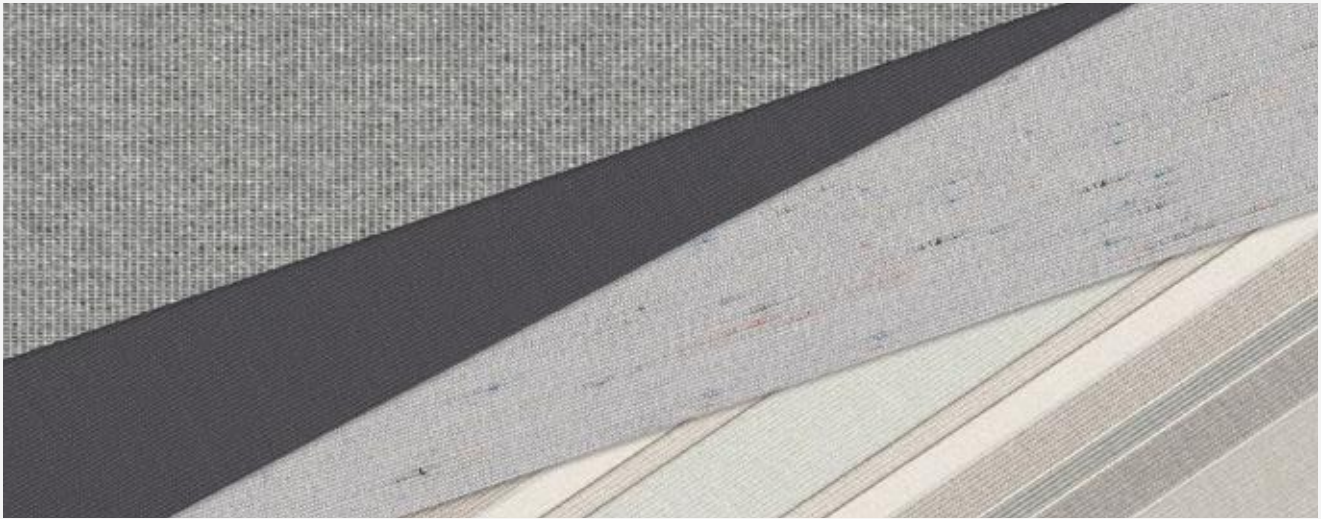
*The SPECTRUM
acrylic collection*

Acrylic fabric quality

The modern classic

The tried and tested Standard acrylic awning fabric is manufactured from 100 % spinning nozzle dyed brand acrylic fabric. Meaning that the colour pigments – unlike in classic yarn dyeing – are applied during fibre production. This ensures reliable protection against damaging UV radiation and guarantees permanently brilliant colours or consistent light-fastness and fastness to weathering. And because it has been impregnated with a special protective agent, the acrylic fabric is especially tear-resistant as well as dirt- and water-repellent. The reliable solution for long-lasting outdoor use.

Lumera acrylic fabric is enhanced by a special CBA fibre (Clean Brilliant Acrylic). This makes the colours appear brighter and more radiant.

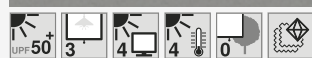
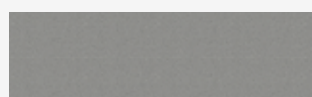


WAREMA Colour World Grey

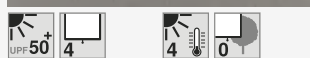


Unicoloured

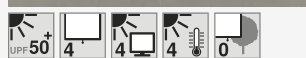
| | | | |
|---------------------|---------------------|---------------------|---------------------|
| 5800 | 6240 | 5300 | 6310 |
| 6200 | 4024 | 4015 | 7940 |
| 7300 | 4040 | 7941 | 6150 |
| 5301 | 5302 | 6400 | 4010 |
| 7220 | 2930 | 7942 | 6470 |
| 6420 | 4023 | 6260 | 4004 |



4041



7944



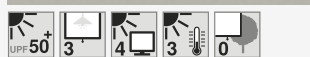
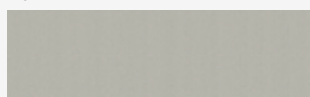
7610



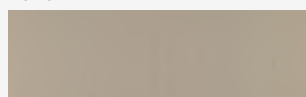
7310



4009



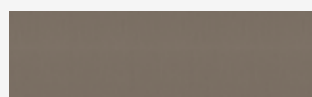
5303



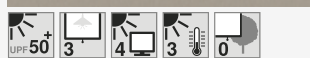
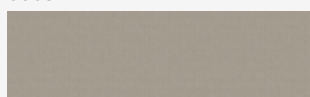
2808



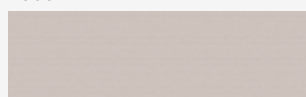
7180



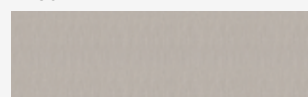
4021



5304



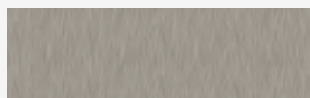
5305



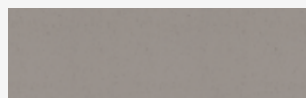
4042



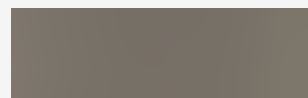
4027



4043



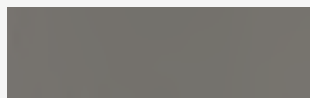
6220



7290



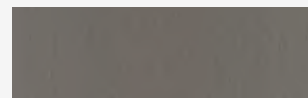
7190



4035



7240



2931



7943



7600



4044



7230



4003



7945



6370



6390

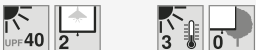


2809



4000

Stripes



2655



4120



2936



2938



4106



2601



2934



4107



2939



2932



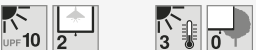
2935



2937



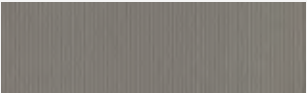
2940



2933



2819



4239



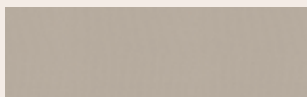
2941



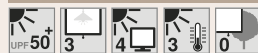
WAREMA Colour World Beige



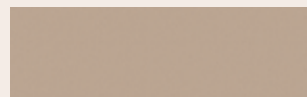
Unicoloured



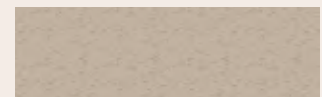
6320



5840



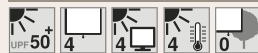
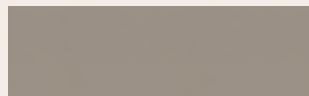
5306



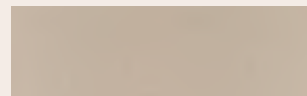
5307



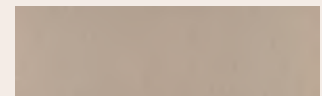
4045



5850



7946



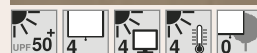
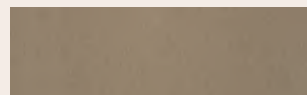
6670



7947



5308



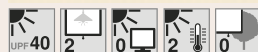
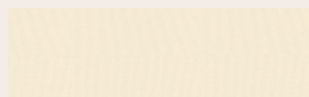
6680



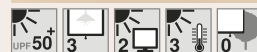
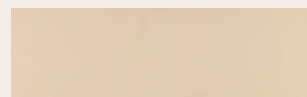
7090



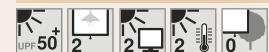
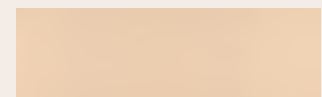
7948



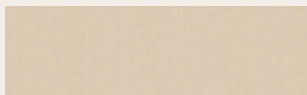
6640



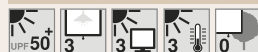
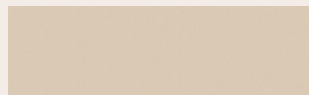
4026



4028



7949



5310



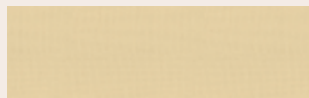
6590



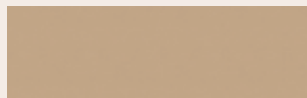
2806



7170



6550



4011



4046



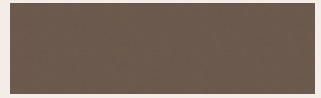
4047



4025



4029



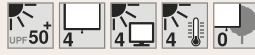
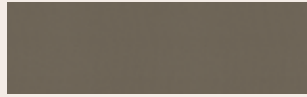
4048



2807

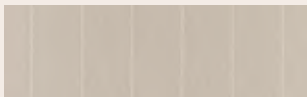


7020

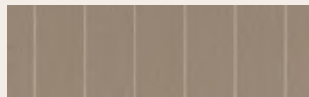


5860

Stripes



2942



2943



2944



4121



4105



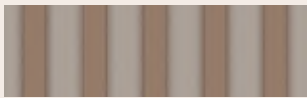
2945



2946



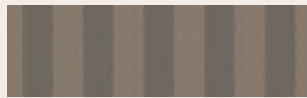
4104



2947



2948



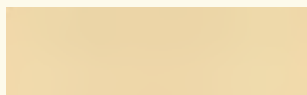
4122



WAREMA Colour World Yellow



Unicoloured



5312



6490



6800



7380



5315



5316



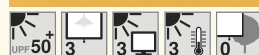
4049



4050



4019



5317



5318



2949



4013



6100



6690



5320



7400



6740

Stripes



UPF 40 3 3 3 0
2253



UPF 50+ 3 3 3 0
2727



UPF 50+ 2 2 0
1235



UPF 50+ 3 3 3 0
2950



UPF 50+ 3 4 3 0
2951



UPF 50+ 3 4 3 0
2647



UPF 40 2 1 2 0
1225



UPF 50+ 3 4 3 0
2219



UPF 50+ 3 3 3 0
2773



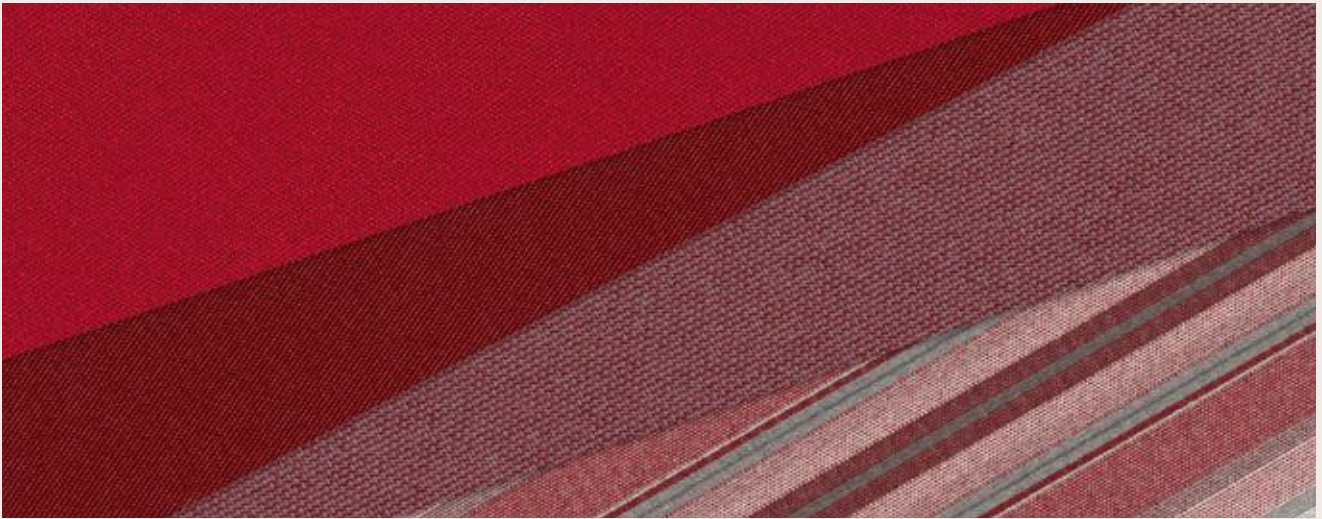
UPF 50+ 3 4 3 0
4110



UPF 50+ 3 2 3 0
4123



UPF 50+ 4 4 3 0
4109



WAREMA Colour World Red



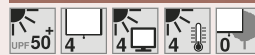
Unicoloured



2959



7952



5900



7953



5890



6840



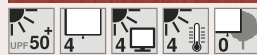
4006



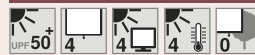
4034



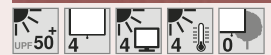
4054



4055



4056



7954

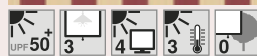


7710

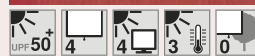
Stripes



2960



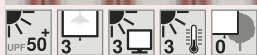
2623



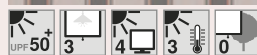
4511



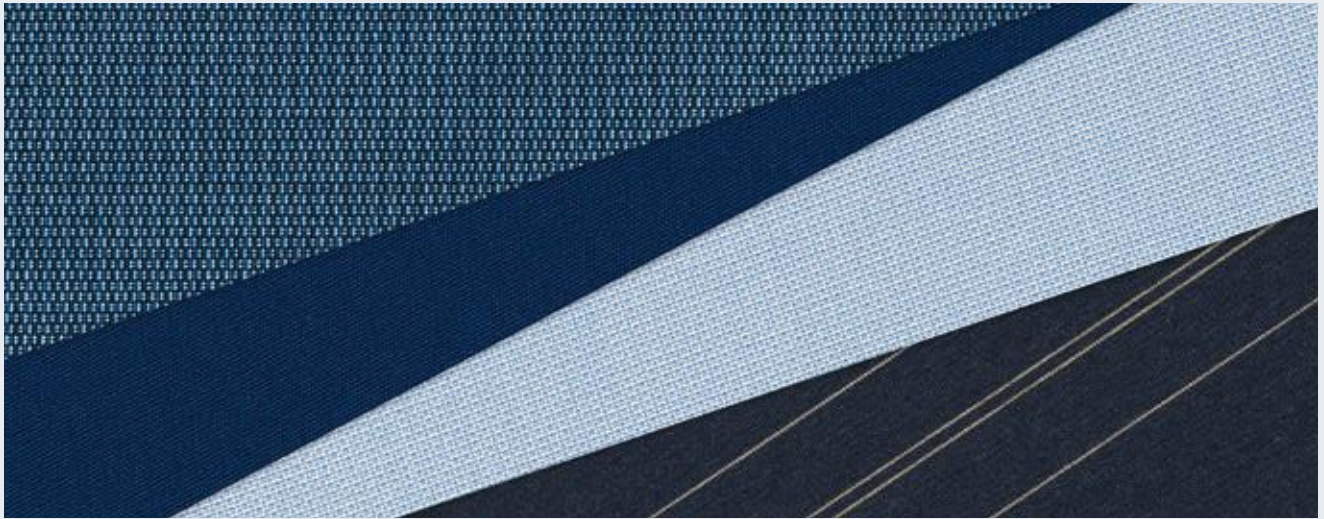
2961



2962



2963



WAREMA Colour World Blue

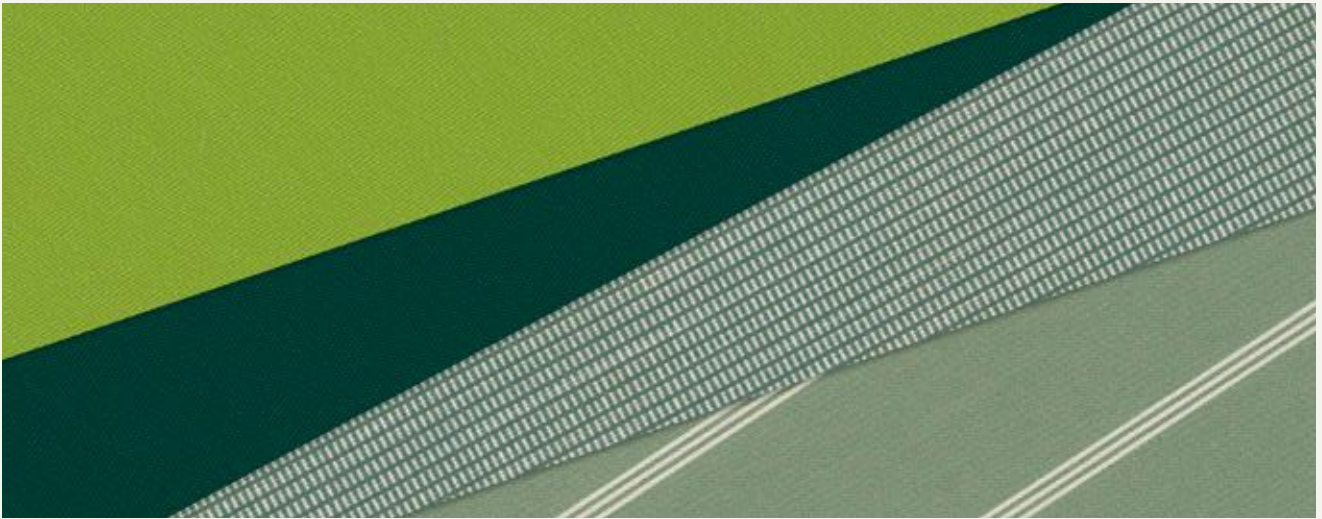


Unicoloured

| | | | |
|-------------------|-------------------|-------------------|-------------------|
| | | | |
| UPF 50+ 4 4 4 4 0 | UPF 50+ 4 4 4 4 0 | UPF 50+ 4 4 4 4 0 | UPF 50+ 4 4 4 4 0 |
| 5330 | 7951 | 5331 | 5332 |
| | | | |
| UPF 50+ 3 4 3 4 0 | UPF 25 2 2 2 0 | UPF 50+ 4 4 4 4 0 | UPF 50+ 4 4 3 4 0 |
| 5550 | 7730 | 7750 | 4052 |
| | | | |
| UPF 50+ 4 4 4 4 0 | UPF 50+ 4 4 4 4 0 | UPF 50+ 4 4 4 0 | UPF 50+ 4 4 3 4 0 |
| 4053 | 5334 | 5335 | 5336 |
| | | | |
| UPF 50+ 4 4 4 4 0 | UPF 50+ 4 4 4 4 0 | UPF 50+ 4 4 4 0 | |
| 5337 | 6450 | 5339 | |

Stripes

| | | | |
|-------------------|-------------------|-------------------|----------------|
| | | | |
| UPF 50+ 4 4 3 4 0 | UPF 50+ 4 4 4 4 0 | UPF 50+ 4 4 4 4 0 | UPF 40 2 2 2 0 |
| 4248 | 2955 | 2956 | 2625 |
| | | | |
| UPF 50+ 4 4 4 4 0 | UPF 50+ 3 4 3 4 0 | | |
| 2957 | 2958 | | |



WAREMA Colour World Green



Unicoloured



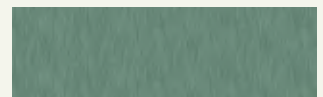
7860



5321



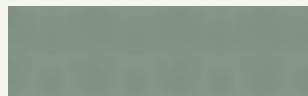
4001



4051



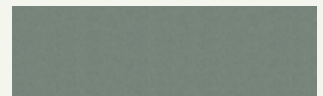
5322



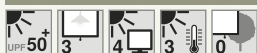
5520



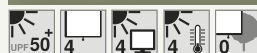
5325



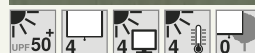
5324



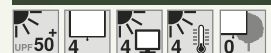
5326



5327



7950



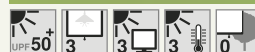
5328



4032



4020



7840

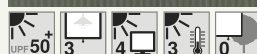


5329

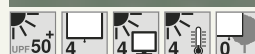
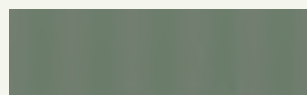
Stripes



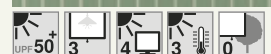
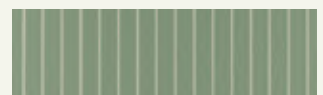
2964



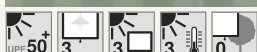
2952



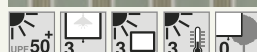
2643



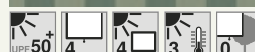
2953



4247



2954



4124



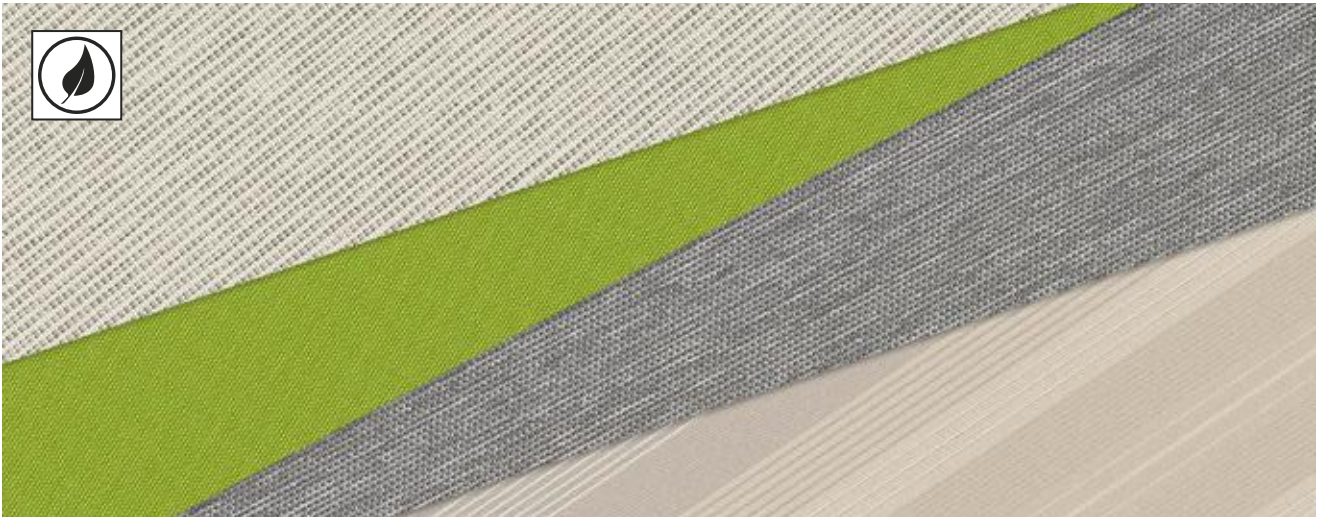
*The SPECTRUM⁺
collection*

Quality for every use

SPECTRUM⁺

The SPECTRUM⁺ portfolio is a collection of functional fabrics for outdoor living products.

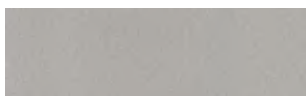
The SPECTRUM⁺ collection is out to impress with its extremely durable quality and special functionalities designed to fulfil requirements. Whether sustainable, resource-saving production from recycled PET or specially coated fabrics for the best possible weather resistance – SPECTRUM⁺ meets all customer needs. Fire protection requirements are also satisfied thanks to the flame-retardant materials such as Sunvas Perla FR, Twilight Pearl, Screen and Soltis fabric W96.



Starlight Blue

The innovative sun protection fabric developed for outdoor use consists of 85% recycled PET and is GRS certified. The manufacturing process for the Starlight Blue awning fabric uses 90% less water and 60% less energy, and produces 45% less CO₂.

Unicoloured



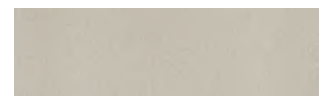
8563



8564



8565



8560



8561



8562



8566



8567



8568



8569

Stripes



8570



8571



8572



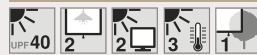
Twilight Pearl

The Twilight Pearl fabric, available in harmoniously coordinated trend colours, combines visual privacy, glare control and sun shading with a good view out. The fabric is 100 % free of PVC and odourless. Used outdoors, Twilight Pearl is the ideal solution for summer thermal protection. Twilight Pearl's textile character makes it optically authentic.

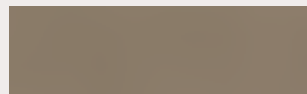
Unicoloured



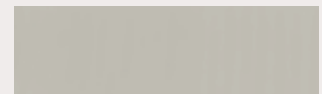
8740



8746



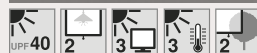
8747



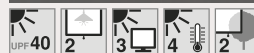
8741



8742



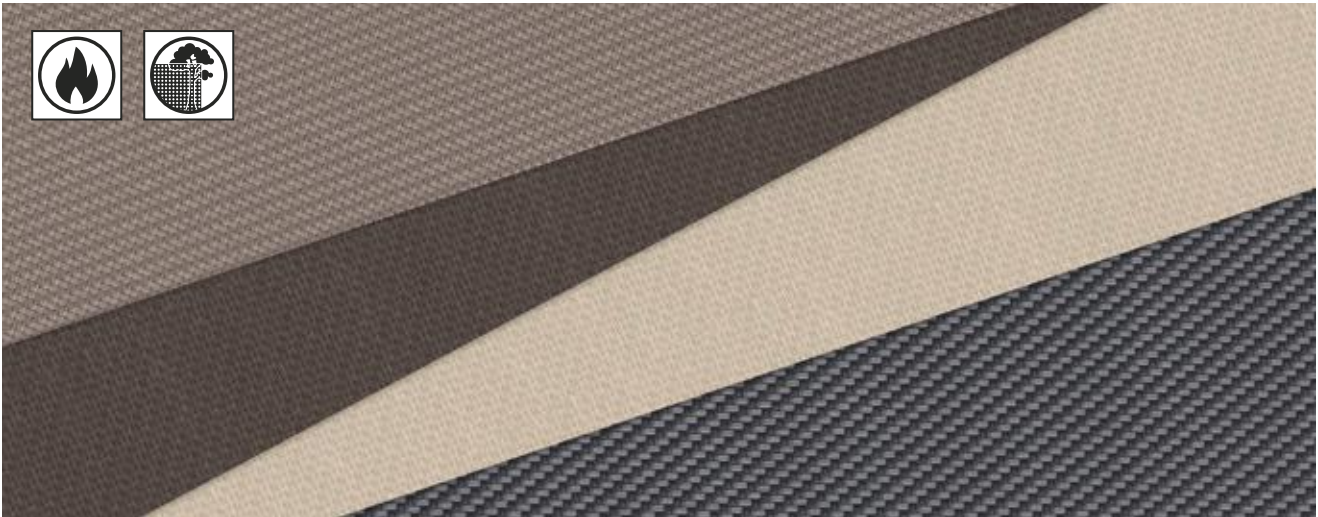
8743



8744



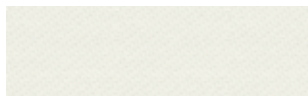
8745



Screen fabric

Screen fabric lets in a good deal of light, providing visual privacy and sun shading at the same time. This is ensured by the PVC-coated glass-fibre yarns of the fabric. These yarns guarantee high dimensional stability and are extremely UV-resistant. Multi-coloured designs with unusual colour accents are also available.

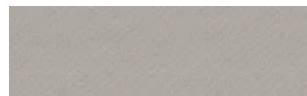
Unicoloured



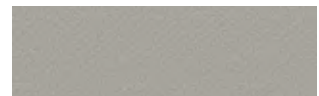
3511



3521



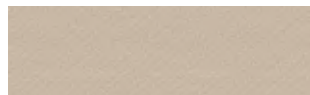
3519



3542



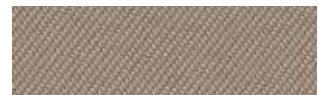
3503



3520



3502



3504



3528



3518



3517



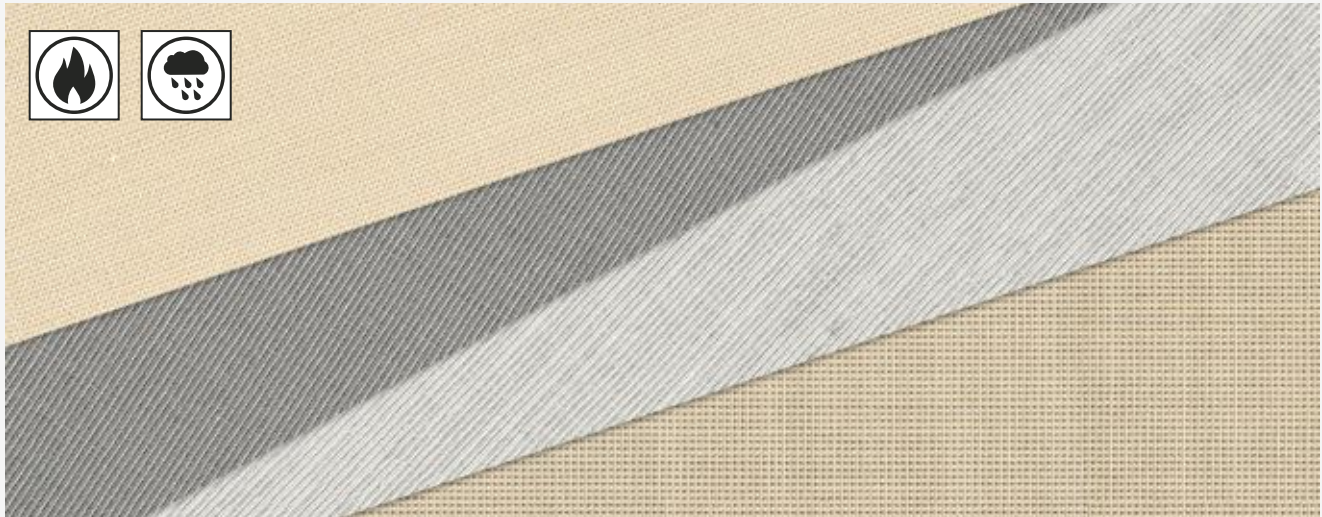
3531



3543



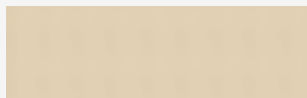
3532



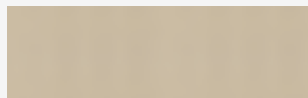
Sunvas Perla FR

Sunvas Perla FR is made of 100% polyester. The awning fabric is yarn dyed and has a transparent FR coating on one side. Thanks to this coating, Sunvas Perla FR achieves building material class DIN EN 13501-1: B-s1, d0 and is flame retardant. In the event of a fire, the fabric generates only a small amount of smoke and does not drip. In addition, the fabric offers reliable rain protection up to a water column of 1000 mm.

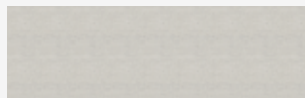
Unicoloured



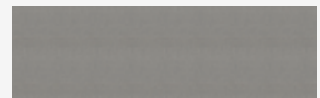
9600



9601



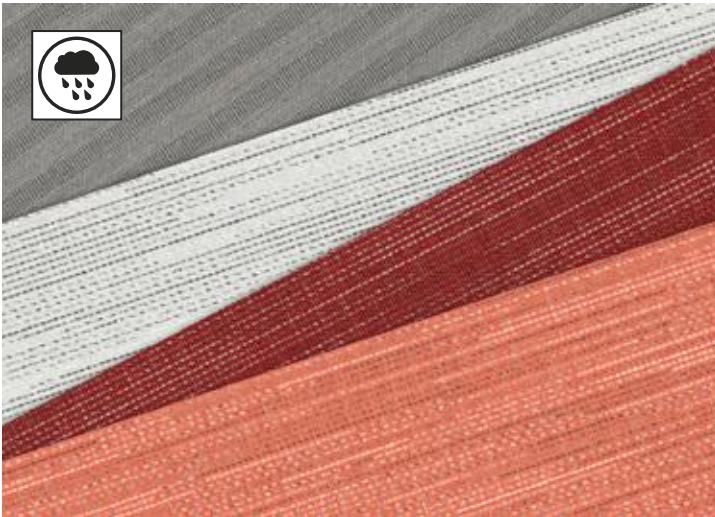
9602



9603



9604



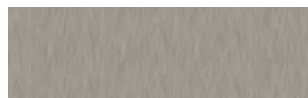
All Weather acrylic fabric

The high-grade All Weather acrylic fabric consists of 100% brand acrylic fabric. The finish applied to the outside with a special transparent coating makes the fabric almost 100% water-proof and even able to reliably withstand a water column of 1000mm. Manufactured from spinning nozzle dyed yarn, All Weather acrylic fabric is also light-fast, weather-proof and even tear-resistant.

Unicoloured



9550



9551



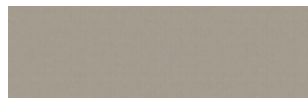
9568



9571



9552



9570



9553



9554



9573



9555



9556



9557



9572



9559



9569



9558



9574

Stripes



9560



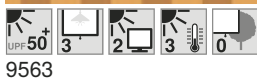
9561



9567



9562



9563



9564



9566



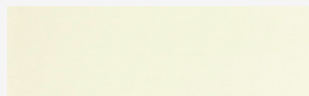
9565



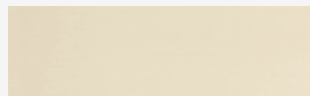
Sunworker Top

The Sunworker Top is equipped with an innovative base material made of high tensile polyester threads. The threads are processed by a special weaving method of the Rachel Trameur technique, making them extremely resistant. An innovative special coating stops the fabric being bleached by UV radiation. A transparent film membrane refines the fabric, making it 100% water-proof (water column > 10000mm).

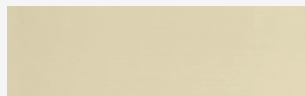
Unicoloured



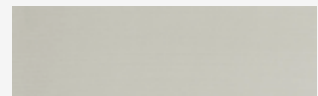
9540



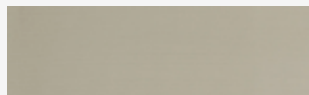
9543



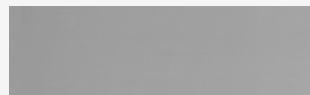
9544



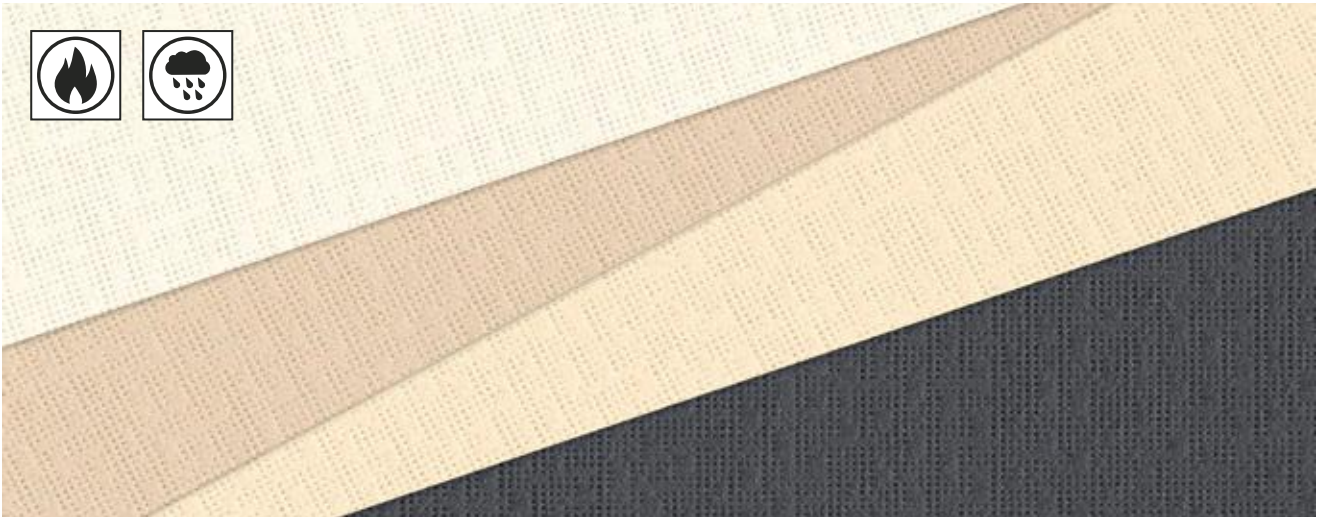
9541



9545



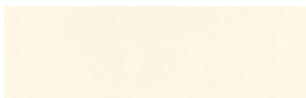
9542



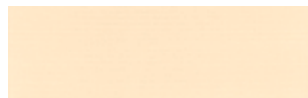
Soltis fabric W96

The Soltis W96 fabric quality is a polyester mesh with a transparent coating. The completely water-proof fabric (water column > 7000mm) lets through plenty of natural light due to the high transparency, ensuring pleasant lighting on your patio. The fabric is light-fast and tear-resistant thanks to its innovative manufacturing process.

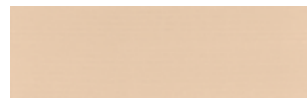
Unicoloured



9510



9513



9514



9511



9512



Enjoy the sun safely

Awnings with built-in UV protection

You love sunny days and want to enjoy as much time as possible outside when the weather is nice? A WAREMA awning makes that wish come true. Our awning fabrics achieve a filter effect for UV rays of between 90 and 100%. This keeps your skin protected.




The colour of the awning fabric also has a special role to play. In some situations, light colours offer less UV protection than dark ones. The temperature feels warmer under lighter fabrics than under darker ones, as the latter absorb more solar radiation. So you can also select the fabric colour to match your feeling of well-being.



Textile sun shading systems based on UPF

What kind of skin do you have? Choose the awning fabric that best protects your skin type. The fabrics are divided into sun protection factors similar to sunscreen: UPF Ultraviolet Protection Factor, UPF for short. The table shows you how long you can stay protected from solar radiation under an awning depending on your skin type. The good news: Awnings offer far more protection against the sun than sunscreen.

What protection factor is ideal for you?

| Type | Features | Reaction of unprotected skin to 30 minutes of sun exposure in June | Safe sun exposure time | Safe sun exposure time under an awning (in min.) | | |
|------|---|--|------------------------|--|--|---|
| | | | |  UPF 12 |  UPF 30 |  UPF 50+ |
| 1 | Fair skin, freckles, blonde or red hair, blue or green eyes | Always sunburn, never tan | 5–10 min. | 60–120 min. | 150–300 min. | 250–500 min. |
| 2 | Fair skin, freckles, blonde or red hair, blue or green eyes | Always sunburn, light tan | 10–20 min. | 120–240 min. | 300–600 min. | 500–1000 min. |
| 3 | Dark hair, blue eyes | Slight sunburn, good tan | 20–30 min. | 240–360 min. | 600–900 min. | 1000–2000 min. |
| 4 | Dark skin, dark or black hair, dark eyes | No sunburn, always tan | approx. 45 min. | approx. 540 min. | approx. 1350 min. | approx. 2250 min. |
| 5 | Dark skin, black hair | No sunburn | approx. 60 min. | approx. 720 min. | approx. 1800 min. | approx. 3000 min. |
| 6 | Black skin, black hair, very dark eyes | No sunburn | approx. 90 min. | approx. 1080 min. | approx. 2700 min. | approx. 4500 min. |

Find the right fabric



| Fabric type | Sun shading | Weather-resistant | Fire protection | View out | Sustainable | Field of application |
|----------------------------|-------------|-------------------|-----------------|----------|-------------|---|
| Acrylic | • | | | | | Terrea, Perea P20/P40, Climara, Sonea, vertical shading |
| Starlight Blue | • | | | | • | Terrea, Perea P20/P40, Climara, vertical shading |
| Twilight Pearl | • | | • | • | | Terrea, Perea P20/P40, Climara, vertical shading |
| Screen fabric | • | | • | • | | Climara, vertical shading |
| All Weather acrylic fabric | • | • | | | | Terrea, Perea P20/P40, Climara |
| Sunvas Perla FR | • | • | • | | | Perea P60/P40 WeatherEdition |
| Sunworker Top | • | • | | | | Perea P60/P40 WeatherEdition |
| Soltis fabric W96 | • | • | • | | | Perea P70 |

Fabric characteristics

State-of-the-art fabrics with impressive characteristics



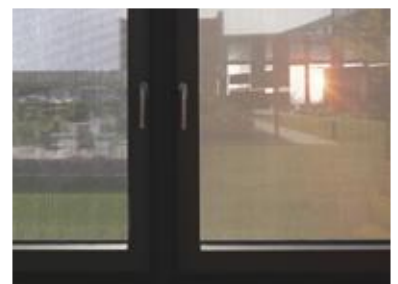
Patterns, colours and designs are important to you at first glance when choosing the fabric. And when you take a closer look, you will also be impressed by the functional benefits of our modern fabrics. That's because not all fabrics are created equal.

Advanced technological processes make our fabrics for awnings, sun sails and similar sunshades all-rounders with special characteristics. The most important functions include a view out, visual privacy, glare control and summer thermal protection.



Lumera
acrylic

The innovative Lumera acrylic fabric consists of a special CBA fibre (Clean Brilliant Acrylic), which make colours look richer and more radiant and increase the fabric's luminance.



View out

The view out for sun shading products is subdivided into four categories. The view out is completely obstructed in category 0 and almost entirely unobstructed in category 4. There are increments in between.



Our interactive planning tools

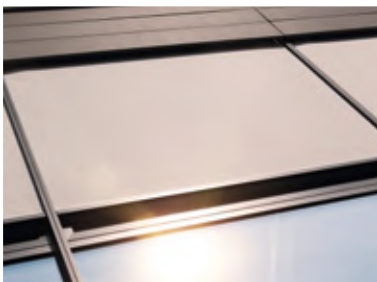
A new awning is an important decision. So take your time and compare our extensive range of fabrics and colours. Our digital tools help you to do this:

Plan your sun shading product on the web with the WAREMA Configurator or live in your own home with the WAREMA Designer app. The WAREMA Designer is available from the app stores free-of-charge.



WAREMA sample shop

Immerse yourself in the diversity of designs and order a free sample directly to your home: www.warema.de/stoffmuster



Visual privacy

The visual privacy indicates whether and how well a person inside a room is visible from the outside under normal and night-time lighting conditions. The categories range from 0 to 4, where visual privacy is fully ensured in category 4 and not guaranteed in category 0. There are increments in between.



Glare control

Glare control ensures optimal visual conditions in the interior or on a working surface with solar radiation. The values range from 0 to 4. 2 is suitable for screen workplaces. 4 blacks out rooms. Lighter fabrics with the same classification let more light into the room.



Protection against overheating

Thermal protection reduces the solar radiation and heat build-up inside the room. The classification ranges from 0 to 4. In category 4, a minimum amount of heat enters the room. These are primarily awning fabrics with dark and dense colours, as they reflect more sunlight.

Freedom of design for colour and texture

Your trump card: Colour and surface selection



Coordinate all parts perfectly, down to the last detail

When it comes to fabric designs and all metallic surfaces, WAREMA offers you maximum freedom of design. You decide the coating colour for the aluminium elements. Our solutions impress with excellent, durable coating quality and intensive colour brilliance.

What makes us special: The WAREMA Colour World is available for all powder-coated aluminium parts.

That means you can uniformly design all WAREMA products in your home – from the awning frame to the insect screen frame. You can decide whether the frame colour matches the sun shading fabric or whether you consciously create accents for the awning and facade. Your options are endless.



Perfect processing: the single source solution

We leave nothing to chance. That is why your awning frame is coated in your preferred colour in our own powder coating plant. Classy, highly precise and more environmentally friendly thanks to chrome-free pre-treatment. This is quality made in Germany!

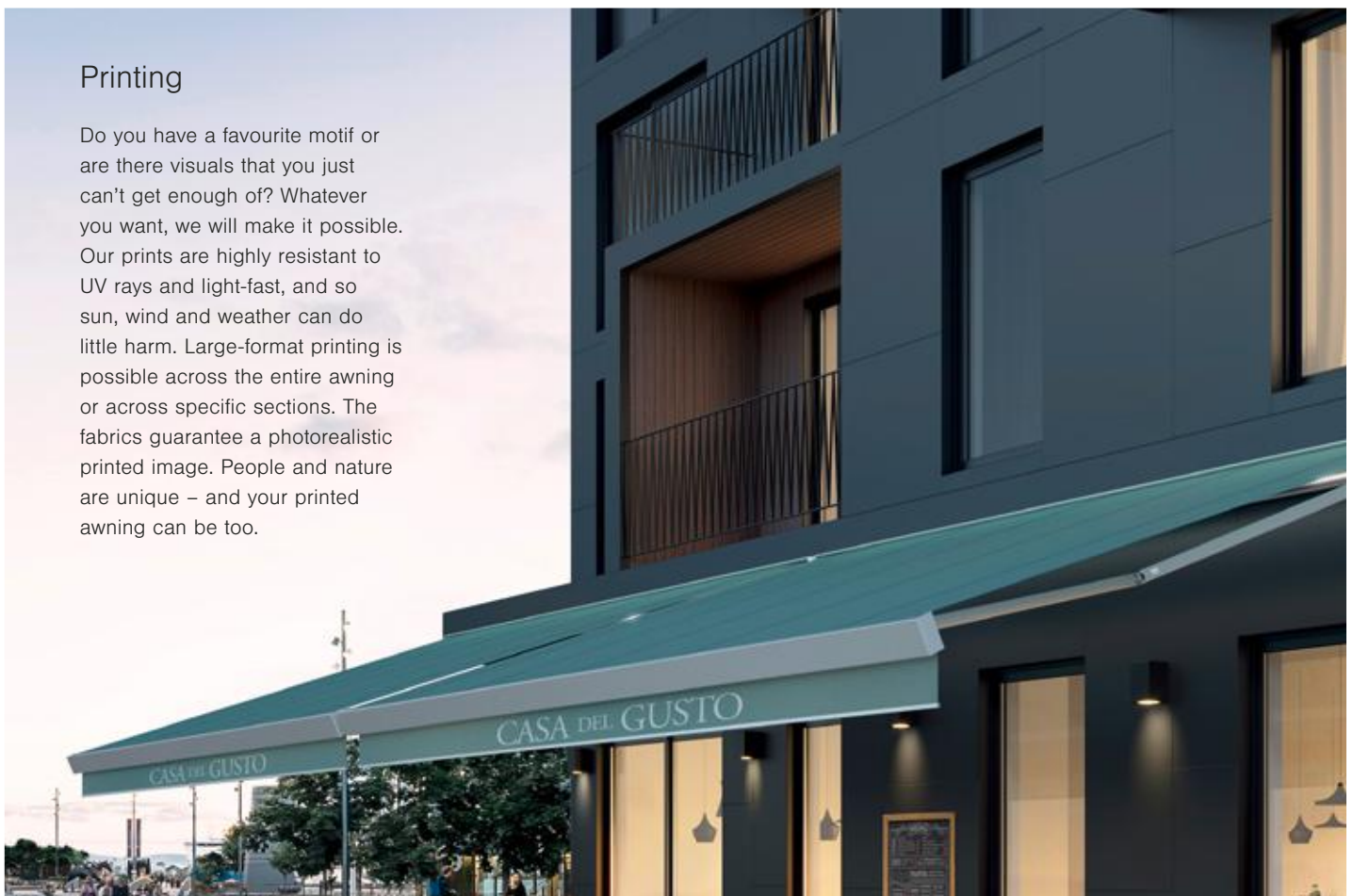


Surface qualities

Five different surface options allow you to make the perfect choice to suit your personal requirements. "Satin finish" has a slightly glossy surface with a smooth profile and optimal light and weather resistance. The "matt" surface, on the other hand, is set apart by a smooth matt finish. The "fine texture" finish adds impressive effects. The highly weather-resistant surfaces are set apart by significantly improved weathering behaviour in terms of gloss retention, weathering, chalking and colour stability. They are available in highly weather-resistant matt and highly weather-resistant fine texture.

Printing

Do you have a favourite motif or are there visuals that you just can't get enough of? Whatever you want, we will make it possible. Our prints are highly resistant to UV rays and light-fast, and so sun, wind and weather can do little harm. Large-format printing is possible across the entire awning or across specific sections. The fabrics guarantee a photorealistic printed image. People and nature are unique – and your printed awning can be too.



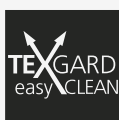


Production

Seven steps to high-grade awning fabric

WAREMA processes quality fabrics from Europe's leading weaving mills:

TEMPOTEST
ITALIAN PERFORMANCE FABRICS



DICKSON

SATTLER
thinking highTEX

✓ 1. Fibre/yarn production

Awning fabrics are made of high-grade acrylic or polyester fibres in which the colour is embedded directly into the fibre through a spinneret or yarn dyeing process. The result is a brilliant display of colour. The fibres are then spun into a sturdy and uniform yarn.

✓ 2. Weaving

Our awning fabrics are created in Europe's leading weaving mills, with which WAREMA has collaborated successfully and promoted joint developments for many years. The web widths of 120 centimetres (depending on the quality) required for production reasons are processed into awning fabric.

✓ 3. Finish

The technological finish of the awning fabrics ensures effective water and dirt-repellent characteristics. The special impregnation with fabrics that are harmless to health and the environment provides the awning fabric with the degree of rigidity required.

✓ 4. Quality control

WAREMA stands for outstanding quality. Every production step, every roll of fabric is continuously checked. And the logistics in our production facility avoids unnecessary transport, the result being optimally protected fabrics.

✓ 5. Cut

The symmetrical cut where the fabric pattern runs evenly to the right and to the left is important for creating a visually perfect awning fabric. This is achieved using ultra-modern cutting machines, as well as additional visual controls with light tables.

✓ 6. Transport

During processing, the awning fabrics are transported only when rolled to prevent wrinkles.

✓ 7. Sewing, gluing, welding or UltraSeam™

Lastly, the strips of fabric are permanently bonded to each other with specialised, durable PTFE (Teflon-coated) sewing threads, such as Tenara® in plain white, or with ultra-modern adhesive technology. Depending on the quality of the fabric, welding can also be used as a means of processing. This involves permanently welding the joining seams as well as the hems in a horizontal direction. UltraSeam™ is another processing option. Here, the strips of fabric at the cut edges of the awning fabric are aligned and joined together with the UltraSeam™ Tape (butt joint tape).



Photographer: Ingo Peters

Jeanette Müller, Awning production

"We use ultra-modern technologies to sew and process customised quality fabrics in our own awning production department in Marktheidenfeld. It's a lot of fun to see how unique awnings are created. This is something we take pride in!"

What you should know

What fabrics can do

Our awning fabrics fulfil the highest technical quality requirements. Yet even state-of-the-art fabrics have physical limits, which you as the owner of the awning should know. Armed with this knowledge, you can enjoy your new WAREMA awning for years to come.

Water-proof and rain-resistant

The awning fabrics are impregnated with a water-repellent finish, and with good care and at an inclination angle of at least 14°, are water-proof during brief periods of light rainfall. If it rains for longer or more heavily, the awning should remain closed or rolled up to avoid damage. If the fabric has become wet, the awning must be extended once again to avoid the formation of mould stains.

Wrinkles

Wrinkling can occur when the awning fabric is cut, sewn, or pulled onto the awning frame. A light line may be visible at the wrinkled location, especially in the case of light colours. When viewed against the light, this line is sometimes mistaken for a streak of dirt.

Waviness in the seams and web area

We sew awning fabrics in lockstitch on state-of-the-art machines. This creates uniform and defect-free seams. Since two strips of fabric overlap in the awning fabrics' seam and hem area, the strip of fabric on top covers a longer distance when raised. This produces tension, which can occasionally result in the formation of small waves in the awning fabric.

Side hem elongation

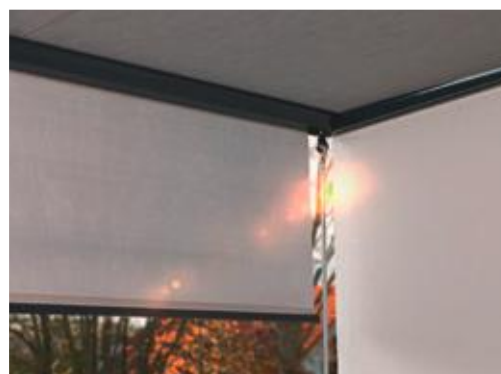
The awning fabric is always kept taut. Here, seams and hems provide additional reinforcement. When the awning fabric is raised, the pressure on the overlapping seams and hems may increase. This strain stretches the awning fabric, and this can lead to slightly wavy side hems when the awning is extended.



Vertical shading solutions

Combination meets function

It's not only sun shading from above with an awning that plays an important role in providing shade. You should also take vertical protection into account. Here, WAREMA can offer you both attractive and functional solutions, such as an additional valance roller blind or vertically mounted window awnings.



Valance roller blind

A valance roller blind protects you against low-lying sun and prying eyes from outside. It can be operated by crank or conveniently with the WMS Hand-held transmitter.



Protection against wind

If you want to enjoy your patio and the fresh air even on windy days, vertical weather protection is the perfect solution. A motor drive allows you to conveniently lower the protection and – as soon as the wind dies down – very quickly and easily raise it again.



Vertical shading in the form of window awnings

Want to find time for yourself every now and again or enjoy the patio with family and friends without being disturbed? Additional all-round protection on the sides of your patio will protect you against prying eyes and keep your space private.

WAREMA accessories

The features make all the difference

Enjoy even more time in the natural surroundings of your garden or outdoor area with WAREMA accessories. Everything is perfectly matched to your WAREMA sun shading system in terms of technology and design. Here are a few recommendations from our broad programme. Let your WAREMA specialised retailer advise you.



Easily integrate your patio into your Smart Home

Our trendsetting solutions for control via app or radio remote control let you operate and automate your awnings and accessories easily and conveniently. Experience the new possibilities of Smart Home on your patio too.

Coordinate all parts perfectly, down to the last detail



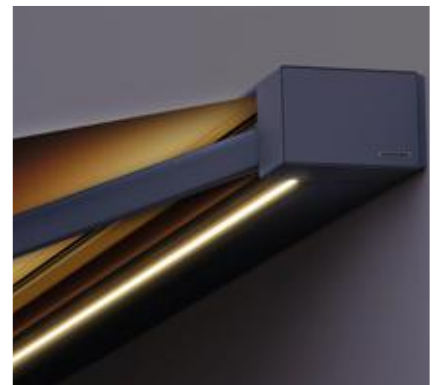
Feel-good atmosphere with radiant heater

Whether for wall installation or integrated into your WAREMA awning: You can create comfort even on cool days with our energy-efficient design radiant heaters.



Patio side screen

Indulge yourself with maximum protection: against low sun, prying eyes or a balmy summer breeze. Our patio side screen can be extended simply by pulling the handle.



Integrated, dimmable LED lighting

When dusk comes, spend a memorable time beneath your awning. The integratable LED lighting makes it possible with various lighting options.

Long-lasting joy from your awning guaranteed

Your decision to go for WAREMA will be rewarded with a pleasant awning that lasts. Because our high-grade awning fabrics are impregnated, they are practically self-cleaning. Thanks to the impregnation, light soiling and fine dust adhere to the surface rather than penetrating the awning fabric. The next time there is light summer rain, the dust is rinsed off the awning fabric through the water-

repellent effect. Please remember that a wet awning fabric must be extended after it has stopped raining to allow it to dry. If special environmental influences soil the awning more heavily, you can find simple and effective maintenance and cleaning tips on our website: www.warema.com



Tip: New awning fabric instead of new awning

With WAREMA, you have chosen an awning with high quality and long, reliable durability. But what happens if you no longer like the design in the future? Or if it no longer suits the renovated architecture of your patio and home? No problem – simply replace the awning fabric. This is both efficient and environmentally friendly. WAREMA is an investment for life with a replacement guarantee.



BRICHBAG – sustainable, social and modern

Sustainable production can be surprisingly innovative. As proven by the close cooperation between WAREMA and BRICHBAG. Textile off-cuts from awning fabrics are made into attractive bags and rucksacks. Each BRICHBAG bought also helps produce a rucksack for the homeless, which is filled with useful items for living rough on the streets. And so sustainability meets social commitment. It doesn't get better than this. Every BRICHBAG is a unique item, get yours: www.warema.de/brichbag



Experience our showrooms:

Sun Forum Wertheim

Almosenberg 11
97877 Wertheim-Bettingen

Sun Center Stuttgart

Böblinger Straße 42
71101 Schönaich

Sun Center Berlin

Am Lilograben 3
14979 Großbeeren

Sun Center Schweiz

A2 Gewerbepark
Stationsstraße 90
6023 Rothenburg (CH)

Sun Center Weert

Schepenlaan 3
6002 EE Weert (NL)

WAREMA International GmbH • Dillberg 14 • 97828 Marktheidenfeld • Germany
www.warema.com/experience

