

WHERE MAGIC HAPPENS...

THE ULTIMATE MARRIAGE OF DESIGN AND QUALITY

In developing its façade cladding, Renson paid a lot of attention to design, personalisation and quality of finishing.

You create your façade cladding according to your own taste. Horizontally or vertically, it fits right into the most diverse styles: from classic over modern to contemporary, letting you create a unique, stylish, elegant and contemporary look for your home or business.

Garage doors and house doors integrate smoothly into a single flush façade surface. Functional elements such as a letterbox, intercom or doorbell are seamlessly integrated. Thanks to the individual profiles, you can even finish curved façades and because of the high-quality finish, they are also suitable for indoor applications.

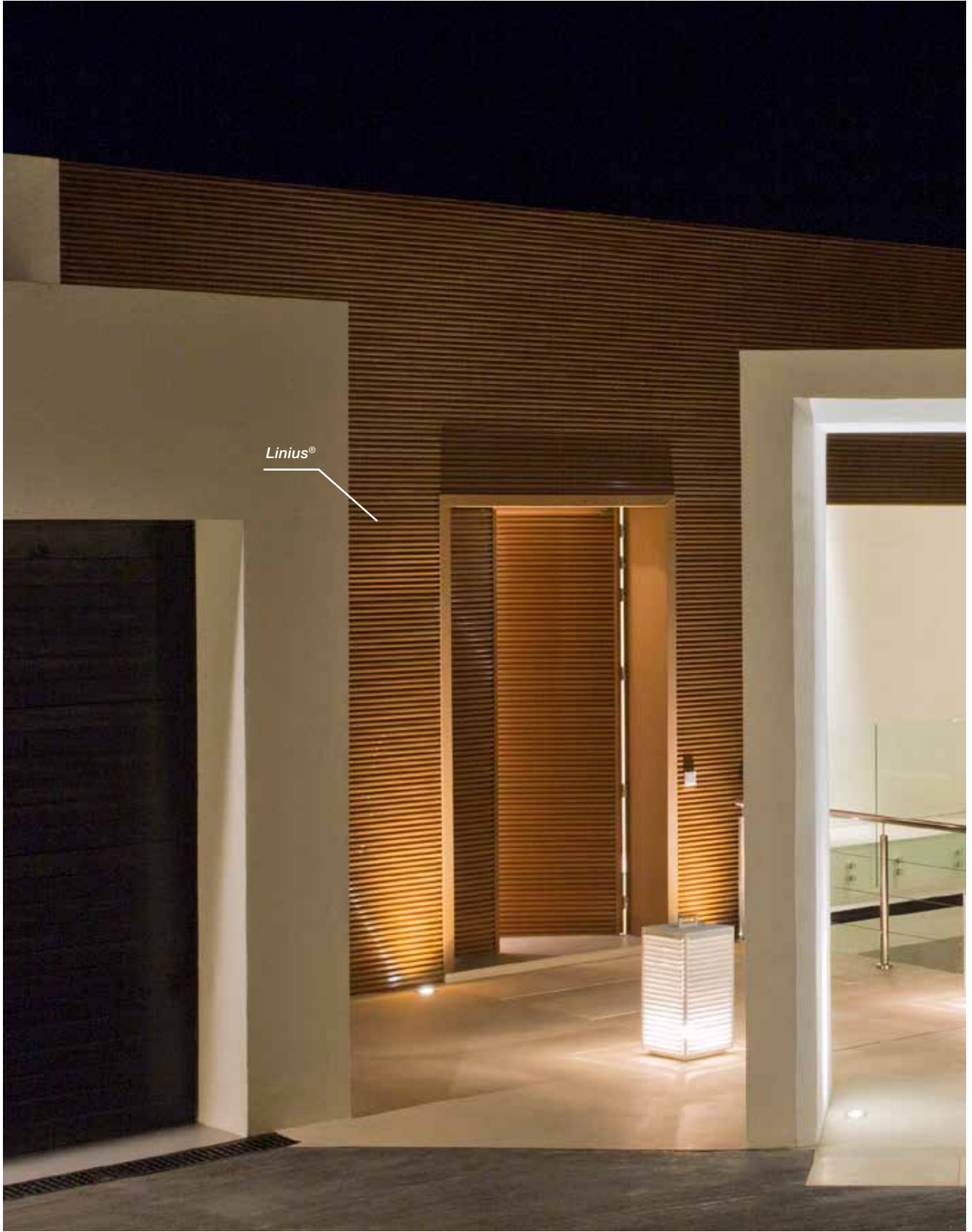
Of course, making them easy and flexible to mount was paramount. In-visible fasteners ensure a sleek design while at the same time allowing thermal expansion.

Renson stands for sustainability, and this aluminium façade cladding is no exception. It is not only durable, but also resistant to all weather conditions. Light and yet strong,... and above all: extremely easy to maintain.

CONTENTS

INTRO	4
WHY CHOOSE RENSON® FAÇADE CLADDING?	5
FAÇADE, OUTDOOR, INTERIOR	8
VERTICAL LINARTE® RANGE	12
HORIZONTAL LINIUS® RANGE	13
LINARTE®	14
LINARTE® BLOCK 16	16
LINARTE® BLOCK 30	18
LINARTE® EVEN	20
LINARTE® RANDOM	22
INFILLS WITH WOOD OR LED STRIPS	26
LINARTE® SYSTEM STRUCTURE	28
LINIUS®	30
LINIUS® L.033	32
LINIUS® SYSTEM STRUCTURE	34
TECHNICAL INFO	38





WHY CHOOSE RENSON FAÇADE CLADDING?

Sleek design

Looking for an extra touch to your home, shop or company building? With Linius and Linarte façade cladding you are guaranteed to impress. Horizontal or vertical, in any colour, for both inside and outside and even as a seamless finish for curved façades or over corners. Thanks to the invisible fixings, you can be sure of an excellent result.

Endlessly personalisable

A subtle design or clear statement: get creative with the possibilities for personalising your façade with different infills in wood or LED lighting, or by combining colours or integrating your house number or company logo. Outdoor sockets, intercom, letterbox or outdoor tap are subtly incorporated.

Easy to install

Aluminium profiles are light and easy to work with. Thanks to the patented fastening system, they can be fastened to the supports quickly and without screws. This invisible clip system is also width-adjustable and easily replaceable, so there are a lot of advantages to be gained even during the installation.

Sustainable quality

By surface mounting with the aluminium profiles you can sure of a durable and sturdy façade cladding, which can withstand the most extreme weather conditions. Moreover, aluminium façade cladding is also an environmentally-friendly choice, because aluminium has earned a reputation as a 'green metal' thanks to its 100% and infinite recyclability.

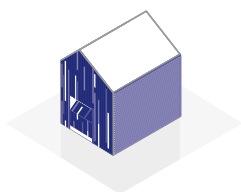
Maintenance-friendly

Aluminium façade cladding requires virtually no maintenance. The powder-coated profiles retain their colour in all conditions and are easy to clean.



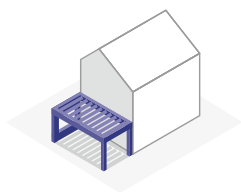
THANKS TO
EASY CLICK
SYSTEM, THE
POSSIBILITIES
ARE LIMITLESS

FAÇADE, OUTDOOR, INTERIOR



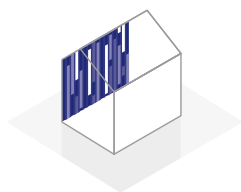
Beautiful façade cladding

Outdoors, Linius or Linarte adds an extra accent to an outside façade, and perfectly combines with other materials for a unique look and feel that can even extend to the interior (see below). Looking for a unique façade? Let your creativity run wild with Linarte infills in wood or LED strips.



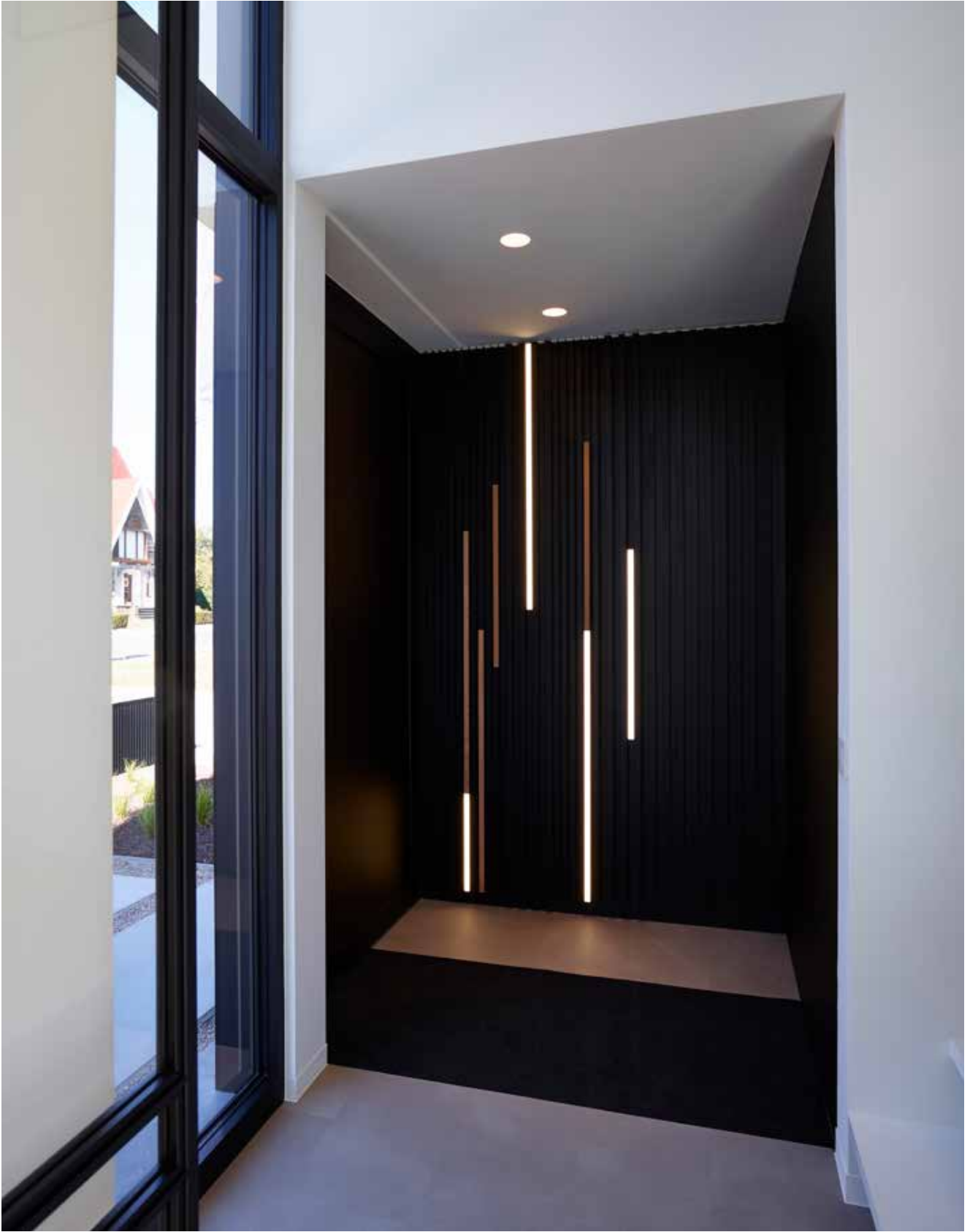
Terrace covering in the same look & feel

If you're looking to achieve aesthetic uniformity, you can even extend the façade cladding up to your terrace. Under one terrace covering, one or more sides can be sealed in the same finish. One style for your entire home or building... guaranteeing you a sleek and uniform look.



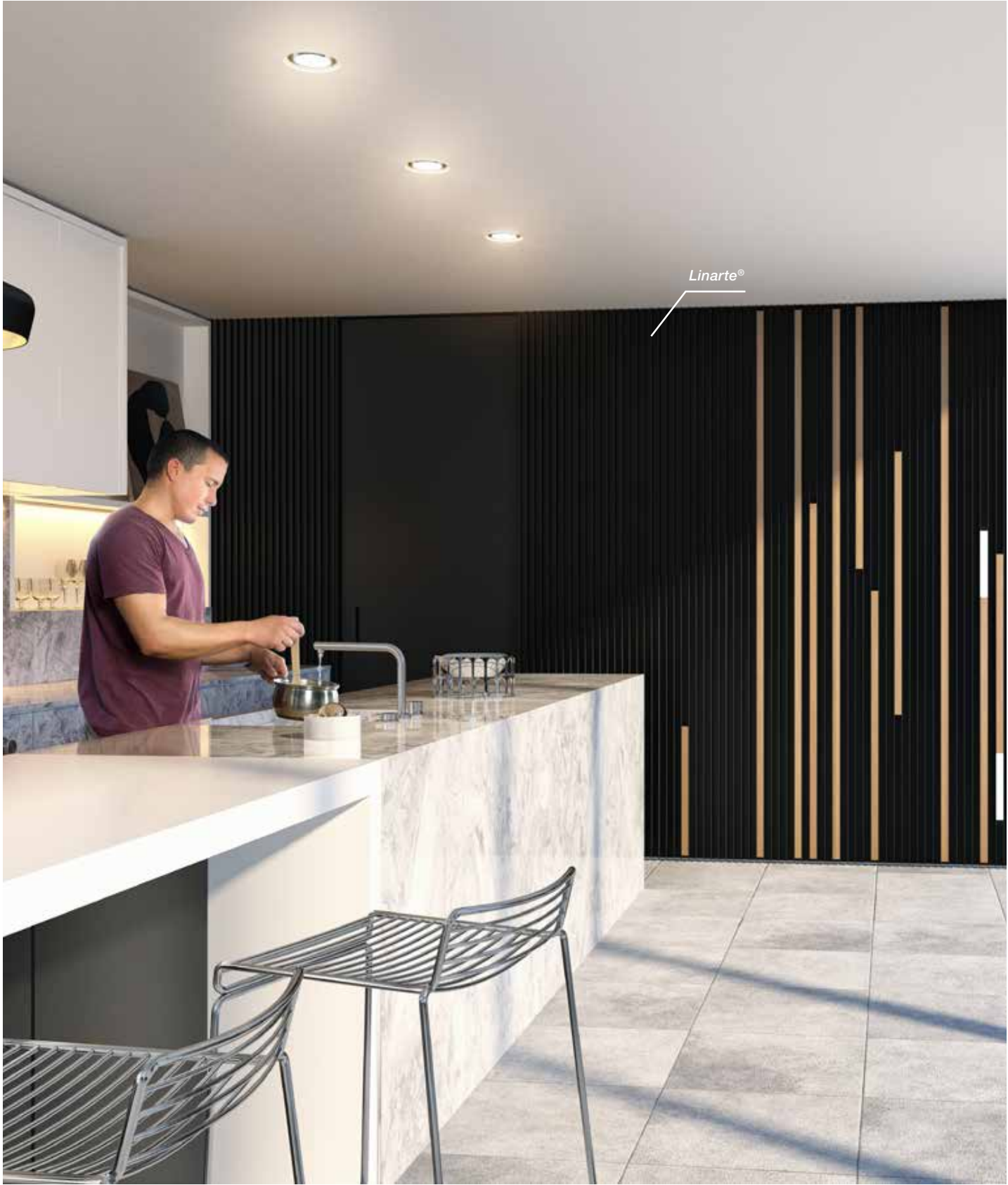
Unique interior

The aluminium façade cladding from Renson can be used just as well inside as outside to give a wall that added accent. You can even seamlessly blend one into the other. For instance, the high-quality materials make it perfectly possible to even clad a staircase with Linarte profiles.



INTRO

FAÇADE, OUTDOOR, INTERIOR



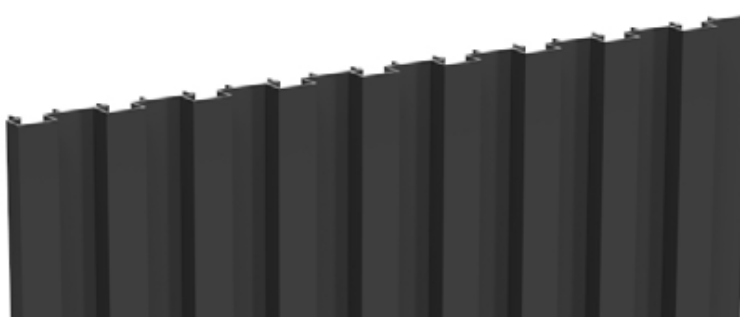
Linarte®



VERTICAL LINARTE RANGE

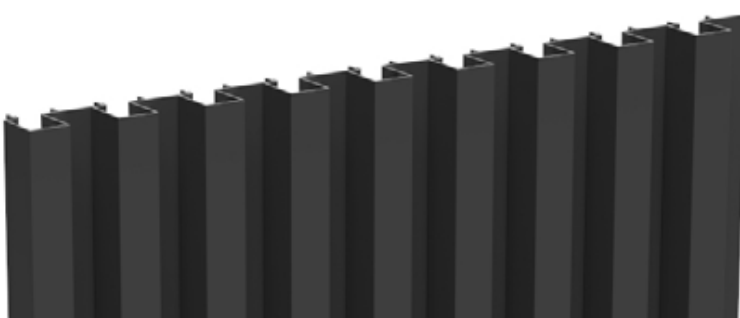
Linarte Block 16

pg. 16



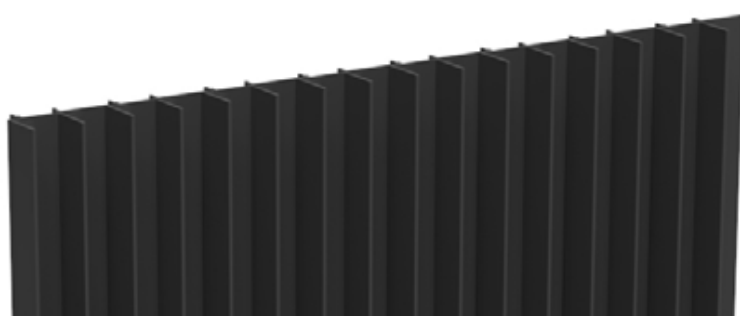
Linarte Block 30

pg. 18



Linarte Even

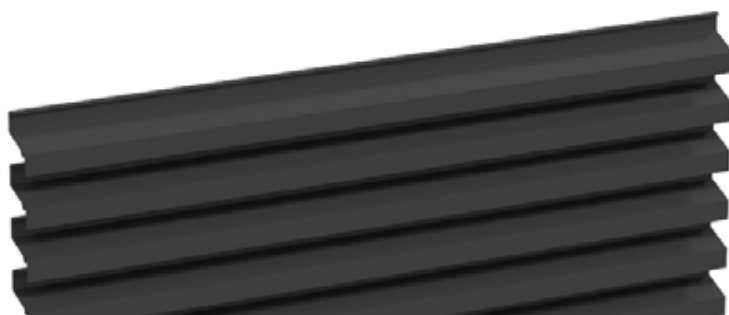
pg. 20



HORIZONTAL LINIUS RANGE

Linus® L.033

pg. 32





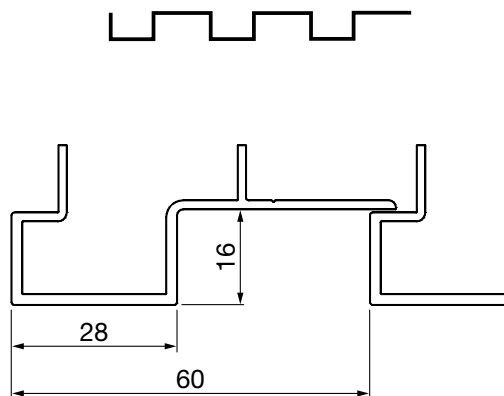
With the Linarte profile, façades or façade parts can be finished to form a sleek and uniform whole with vertical profiles in different designs: both inside and outside, and even for terrace coverings. Gates or doors can also be clad with the same profiles, seamlessly blending into a uniform façade. The façade system consists of individual aluminium profiles, which are available in various designs and can be infinitely finished with infills in wood or LED strips.

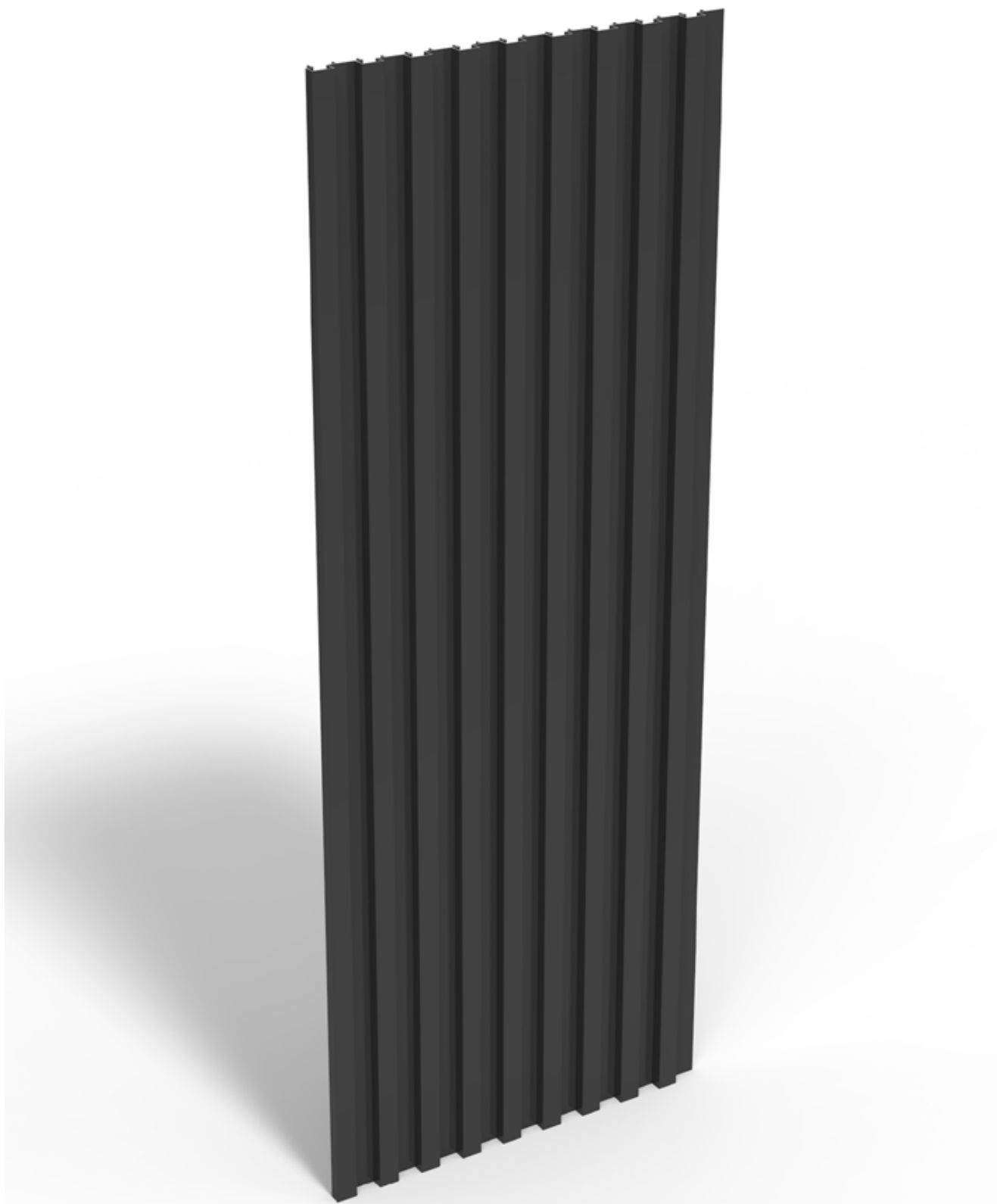


LINARTE®

LINARTE BLOCK 16

The basic version of the Linarte block-shaped aluminium profile is 16 mm deep. This limited depth creates a subtle vertical play of lines with limited relief and a minimalistic look.



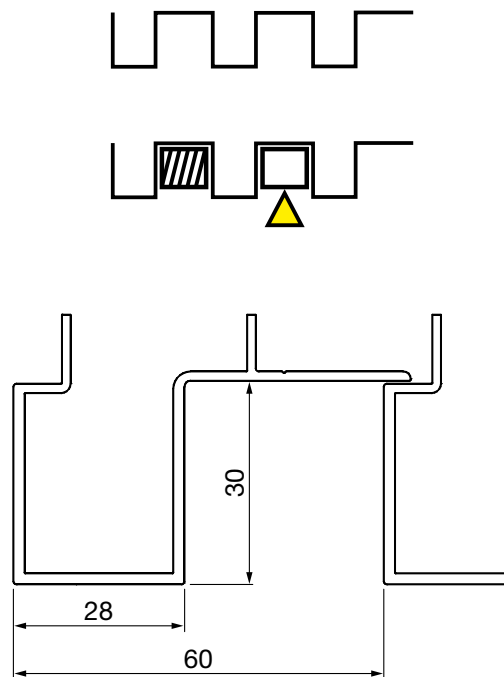


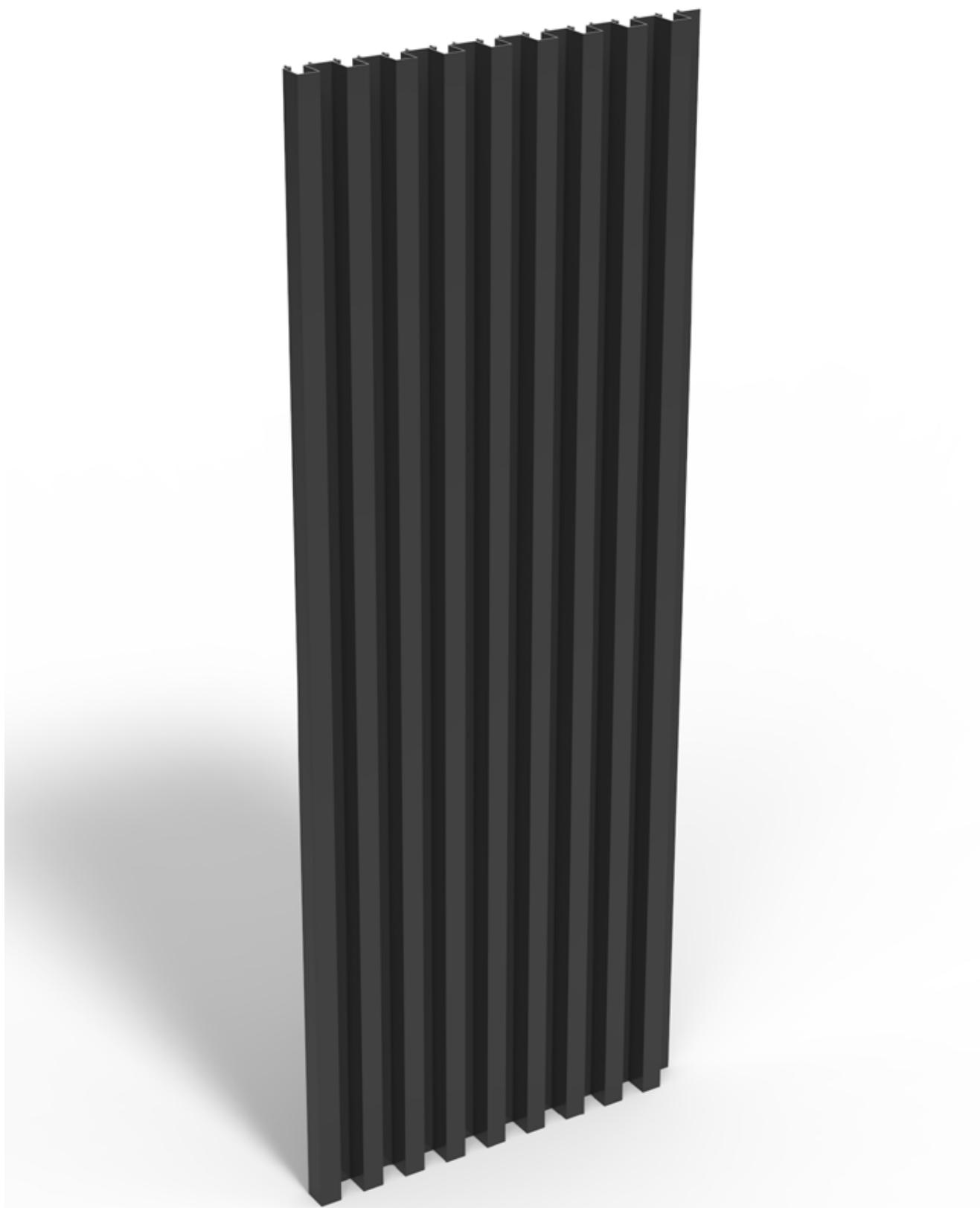
LINARTE

LINARTE® BLOCK 16

LINARTE BLOCK 30

The block-shaped Linarte profile of 30 mm depth creates a strongly pronounced vertical linear design. This creates striking shadow effects that bring a façade to life. This deep block profile can be combined with infills in wood or LED strips.



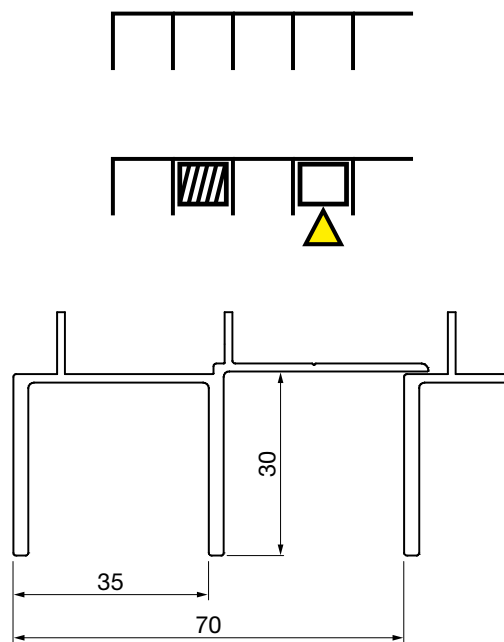


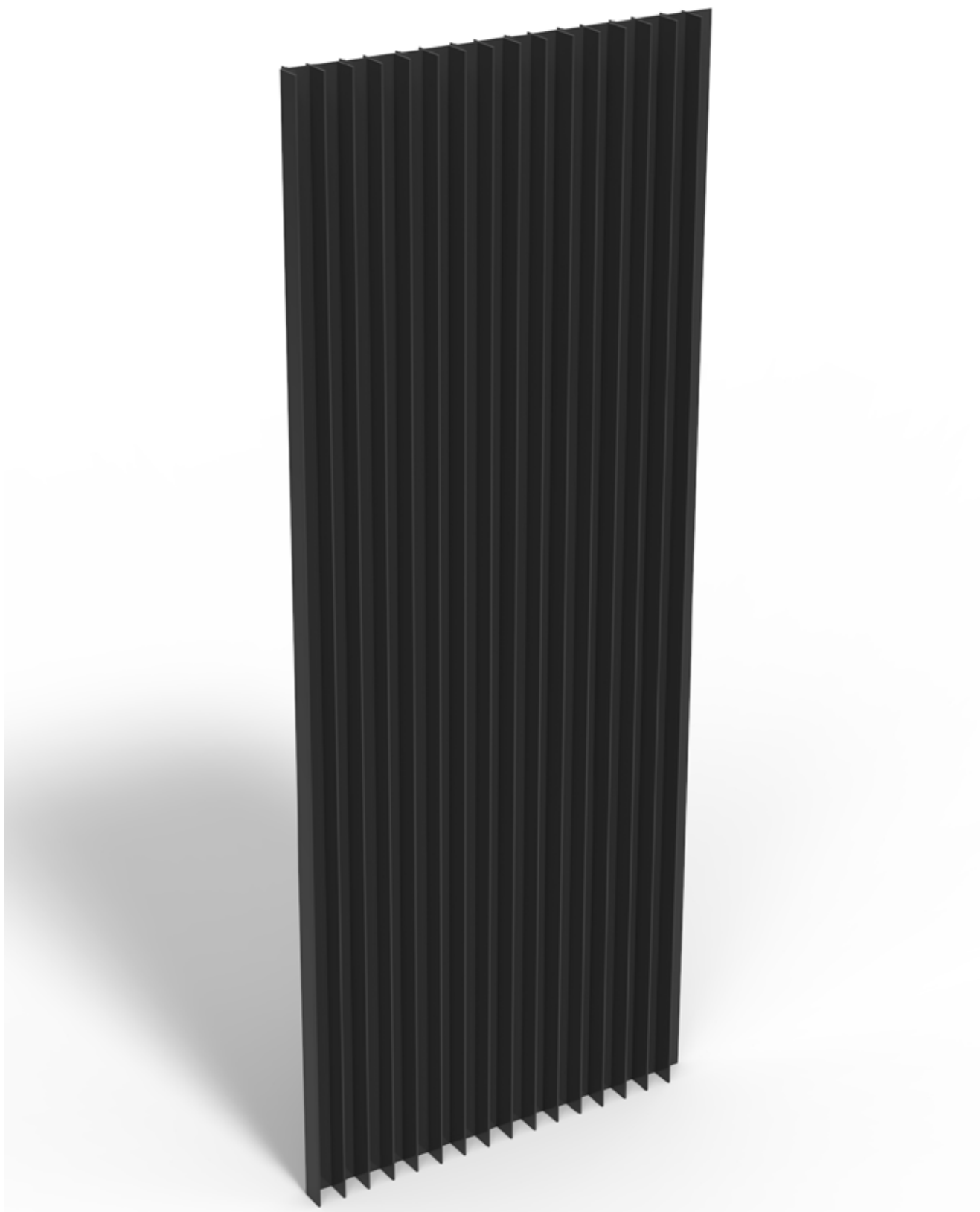
LINARTE

LINARTE® BLOCK 30

LINARTE EVEN

The rib-shaped Even profile of 30 mm depth provides the tightest Linarte result and brings out the vertical lines of a façade to greatest effect. This block profile can be combined with infills in wood or LED strips.



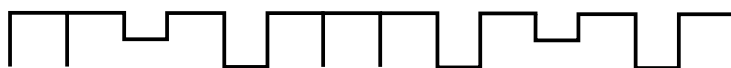


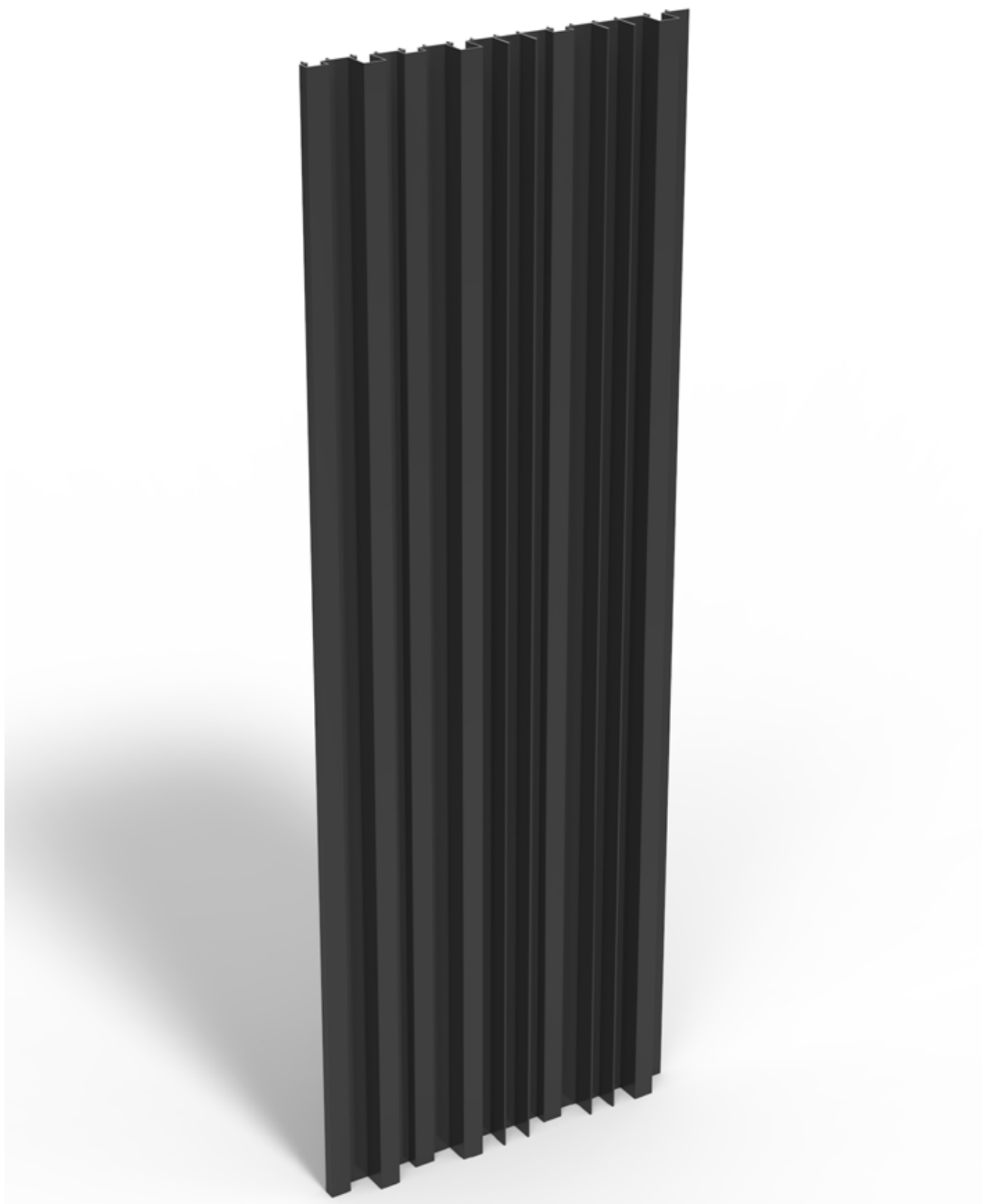
LINARTE

LINARTE® EVEN

LINARTE RANDOM

Block or Even, all Linarte profiles can be combined with each other. Let your creativity run free, create a unique play of light and shadow and combine your façade to heart's content to give it a personal character all its own.





LINARTE

LINARTE® RANDOM





INFILLS WITH WOOD OR LED STRIPS

Wood or LED strips can be incorporated both in the 30 mm-deep Block and Even profiles. These infills are available in various lengths and can be integrated anywhere in the façade: randomly, tight in line or repetitively. It gives you endless possibilities to give your façades a custom finishing touch. You can even integrate logos or house numbers (in wood).



No infills



Infills with wood strips



Infills with LED strips



Infills with wood & LED strips

LINARTE

INFILLS WITH WOOD OR LED STRIPS

LINARTE SYSTEM STRUCTURE

- ① Supporting wall
- ② Insulation
- ③ CLS
- ④ Aluminium supports
- ⑤ Clips
- ⑥ Linarte profiles
- ⑦ Supporting profile



LINARTE

LINARTE® SYSTEM STRUCTURE

With the Linius system, façades or façade parts can be finished to create seamless wholes with a strong horizontal or vertical accent. Gates or doors can also be clad with the same profiles. This way you get a precise and tight fit with the rest of the façade to create a uniform whole.

The façade system consists of individual aluminium profiles, which are available in different versions. Depending on the application, you have the choice between either completely closed or ventilating systems.

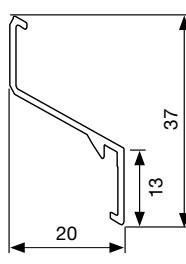
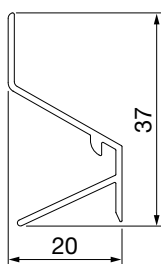


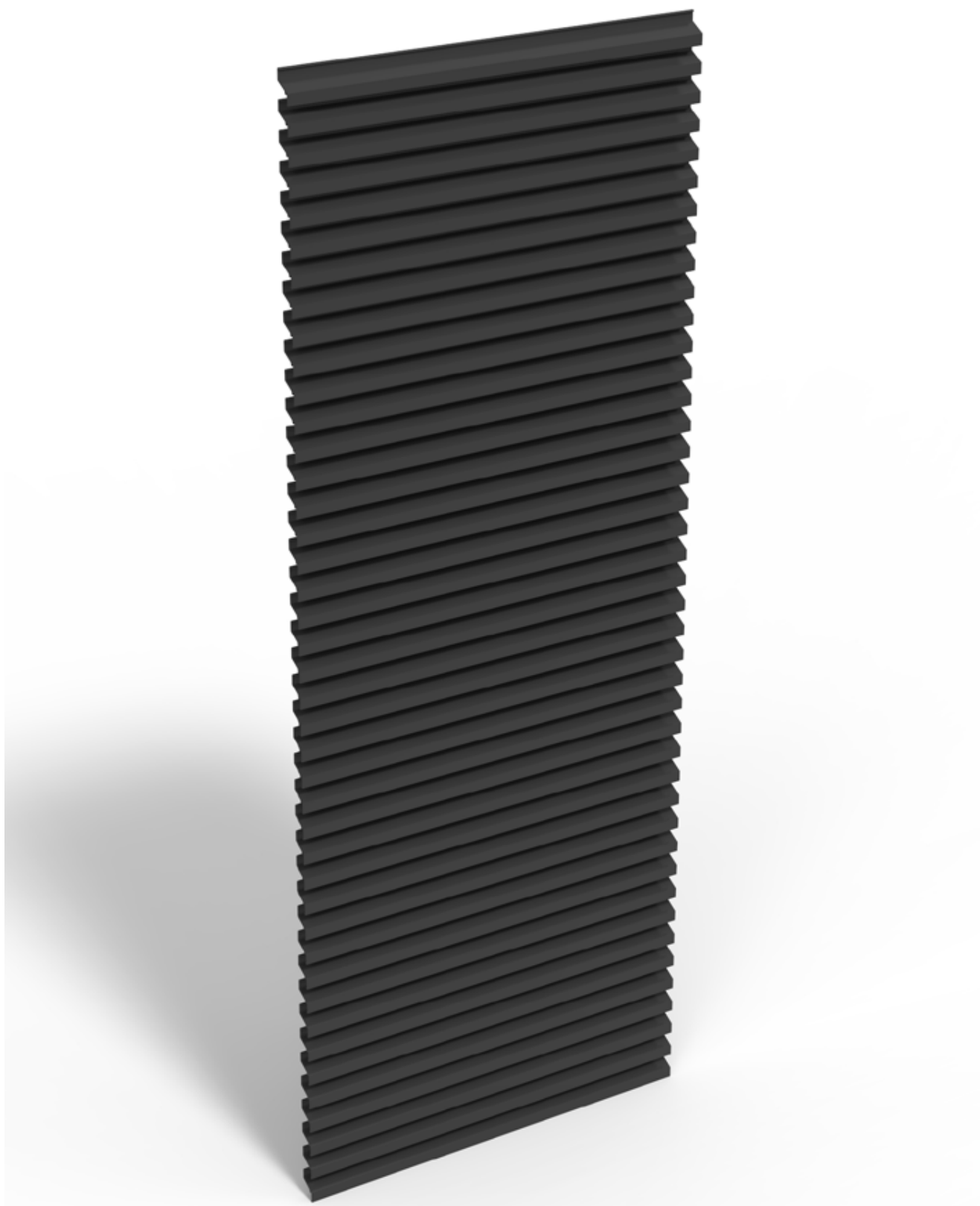
LINIUS[®]

LINIUS

L.033

The Z-shaped Linius L.033 profiles are 22 mm deep. They give your façade a strong horizontal accent, sober and refined.





LINIUS

LINIUS® L.033

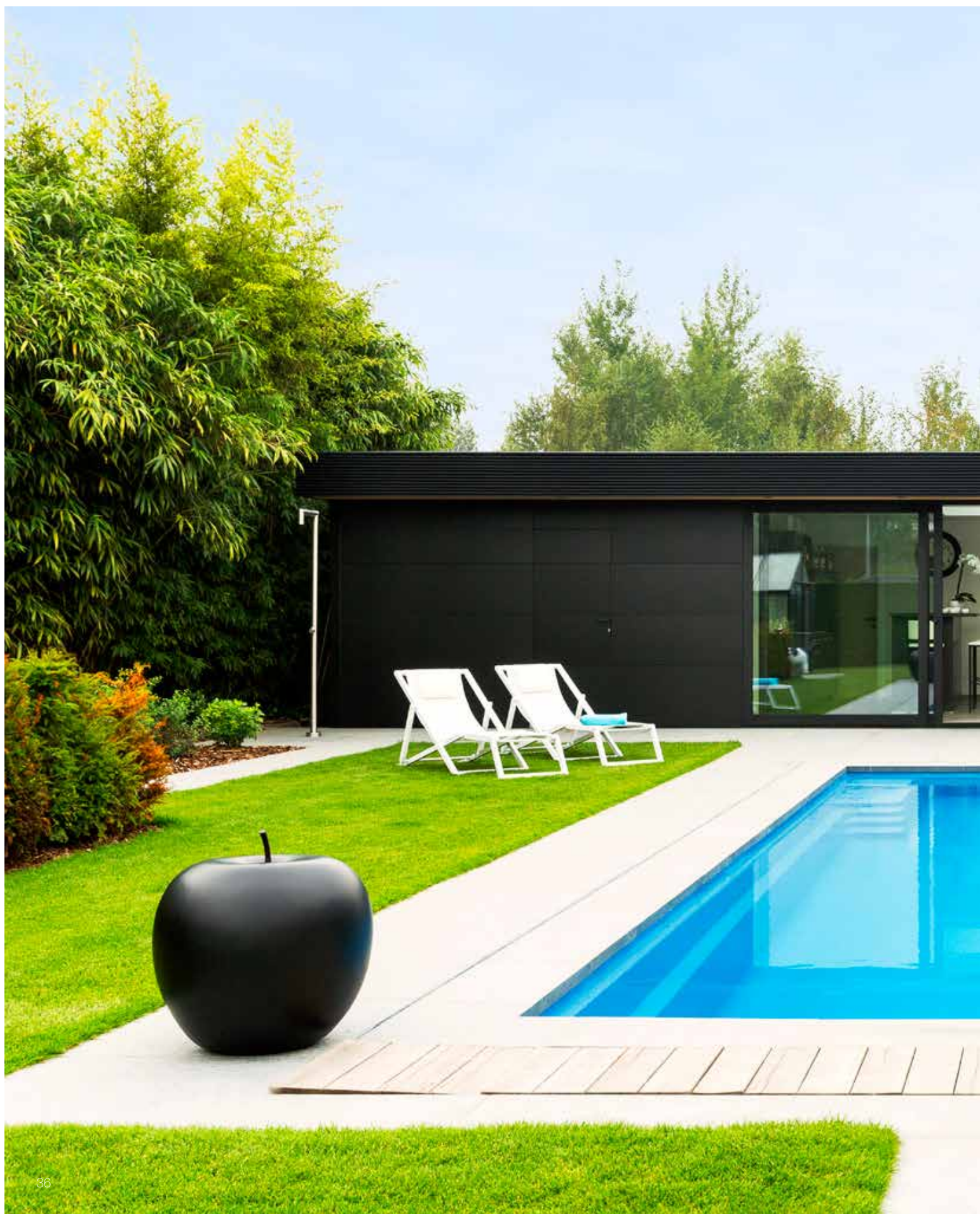
LINIUS SYSTEM STRUCTURE

- ① Supporting wall
- ② Insulation
- ③ CLS
- ④ Aluminium supports
- ⑤ Clips
- ⑥ Linius profiles



LINIUS

LINIUS® SYSTEM STRUCTURE





Linus®

LINUS





TECHNICAL INFO

PARTNERSHIPS

Thanks to an exclusive collaboration with the partners below, Linarte façade cladding can be a perfect part of a personalised total solution with integrated technologies such as videophony, light, letterbox and door systems.

ALL RAL COLOURS

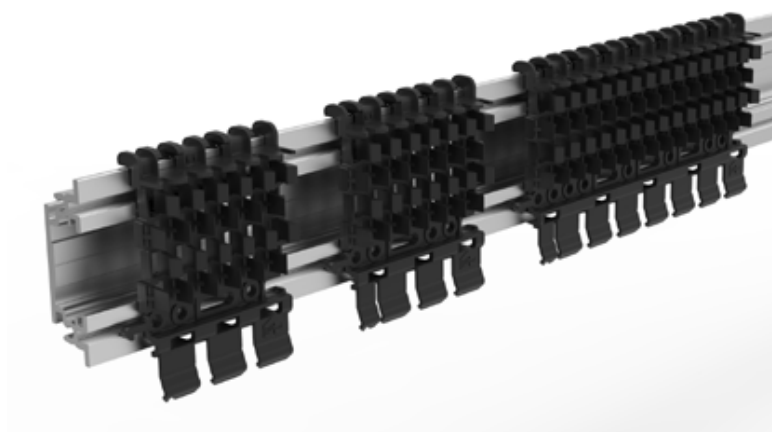
Both Linius and Linarte profiles are available in all RAL colours. Renson recommends structural lacquer for an architectural, contemporary look. Moreover, a finish in textured lacquer is better suited for outdoor use and scratches are less visible.

TECHNICAL INFO

OUR TECHNOLOGIES

Linarte click system

The Linarte profiles are mounted invisibly on patented plastic clips. This way they can be quickly mounted while thermal expansions are always absorbed.



Linus finger trap protection

For sectional doors, Renson has devised a special, patented mechanism to prevent fingers from getting stuck. The aluminium profile curves away when a finger accidentally lands between two sections of the gate. Afterwards the profile automatically returns to its original position.



TECHNICAL INFO

WARRANTY

High quality

All the materials we use are high quality and are adapted to their purpose.
As a manufacturer, we warranty:

- 5-year warranty on all defects that may occur during normal use and maintenance.
- For the paintwork of the aluminium parts, there is a warranty of 10 years for colourfastness.
- A warranty of 5 years is provided on the gloss of the lacquered profiles.
- There is a 3-year warranty for the LED strips.



MAINTENANCE

Your façade cladding is subject to all possible weather influences. That is why we advise regular maintenance in order to continue to enjoy it for years and years to come. With just 1 to 2 service intervals a year, the façade cladding will last longer and retain its original gloss. The Renson Maintenance Set is a good tool to keep your façade cladding looking like new.

- The Linius and Linarte profiles are made of powdered aluminium. Cleaning annually with the products from the 'maintenance set' is recommended for maintaining the intense colour for years and years and as an extra protection against acid rain, sea air and UV rays. If you live on the coast and in wooded areas we recommend a bi-annual cleaning.
- Renson 'Clean' is a concentrated product with strong cleaning and degreasing properties for the most common natural pollutants such as dust, greasy deposits, grease stains, moss, insect traces etc. This product is not comparable to most conventional cleaning products. After cleaning you protect the aluminium profile with Renson's 'Protect'. This product leaves behind a protective film, which makes later maintenance a lot easier. That way you can simply rub the aluminium clean with a minimum of Renson 'Clean' product.
- Do not use either product under the full sun or in warm weather. When they dry quickly, it can leave stains on the aluminium. Never use caustic or aggressive products, scouring pads or other abrasives to clean your aluminium façade cladding. Similarly, never clean it with a high-pressure device.
- A maintenance kit is also available for the wooden inserts.



RENSON®: YOUR PARTNER IN VENTILATION, SUN PROTECTION FABRIC, FAÇADE CLADDING AND OUTDOOR CONCEPTS

Renson®, headquartered in Waregem (Belgium), is a trendsetter in Europe in the field of natural ventilation and outdoor sun protection.

Creating healthy spaces

With experience dating back to 1909, we today develop energy-efficient total solutions that aim for a healthy and comfortable indoor climate in buildings. Our remarkable headquarters, built according to the Healthy Building Concept, is a perfect reflection of our company's mission.

No speed limit on innovation

A multidisciplinary team of more than 80 R&D employees continuously optimises our existing products even further and develops innovative total concepts.

WHAT YOU CAN DO FOR RENSON® PRODUCTS AS AN END CUSTOMER?

To ensure high-quality expertise and professional installation of Renson® products, we have built a network of well-trained Ambassadors and Installers.

RENSON® Premium Ambassadors

These are ambassadors who have years of experience in selling and installing Renson® products. They also follow the entire product range and ensure the most professional guidance possible.

RENSON® Ambassadors show our products in their showrooms and ensure that the purchased product is installed in a professional and reliable manner with their own installation team. In addition, they guarantee a professional after-sales service.

Also visit: www.renson.eu/en-us/products/wall-cladding



YOU CAN ALSO DOWNLOAD OUR
OTHER INSPIRATION BROCHURES
ON WWW.RENSON.EU



VENTILATION



SUN PROTECTION



OUTDOOR CONCEPTS



**RENOVATION/ (RE) BUILDING PLANS?
VISIT OUR SHOWROOM**

EXIT 5 is open
Monday to Friday: 8h30 – 12h00 and 13h30 – 18h00
Saturday: 9h00 – 12h00

Make an appointment by phone on 056 62 96 87
or online via www.exit5.be

Maalbeekstraat 10 - 8790 Waregem - Belgium
www.exit5.be



Creating healthy spaces

RENSON® Headquarters

Maalbeekstraat 10, IZ 2 Vijverdam B-8790 Waregem

Tel. +32 (0)56 62 71 11

info@renson.eu

www.renson.eu



L2009917 02/19 English