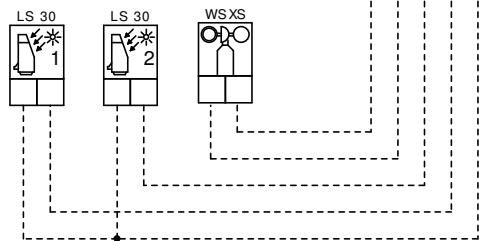
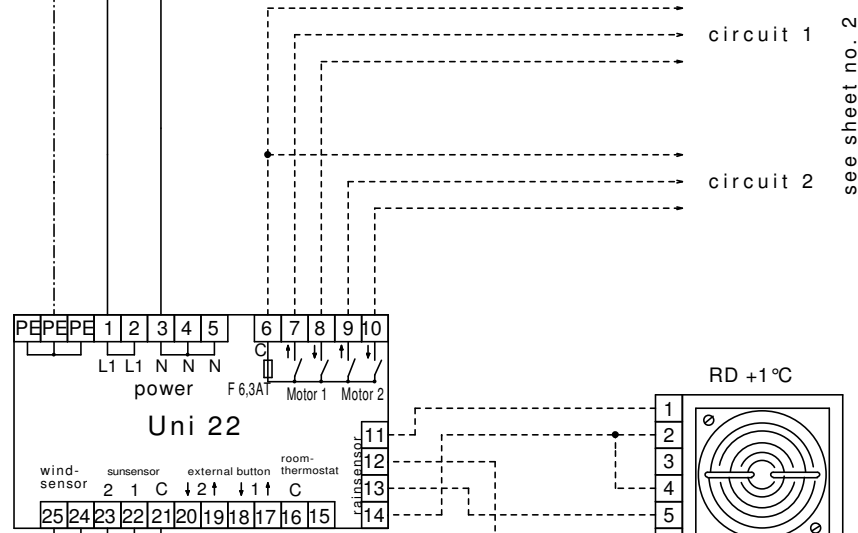


L1
N
PE
Supply 230V~



230V wire

low voltage wire

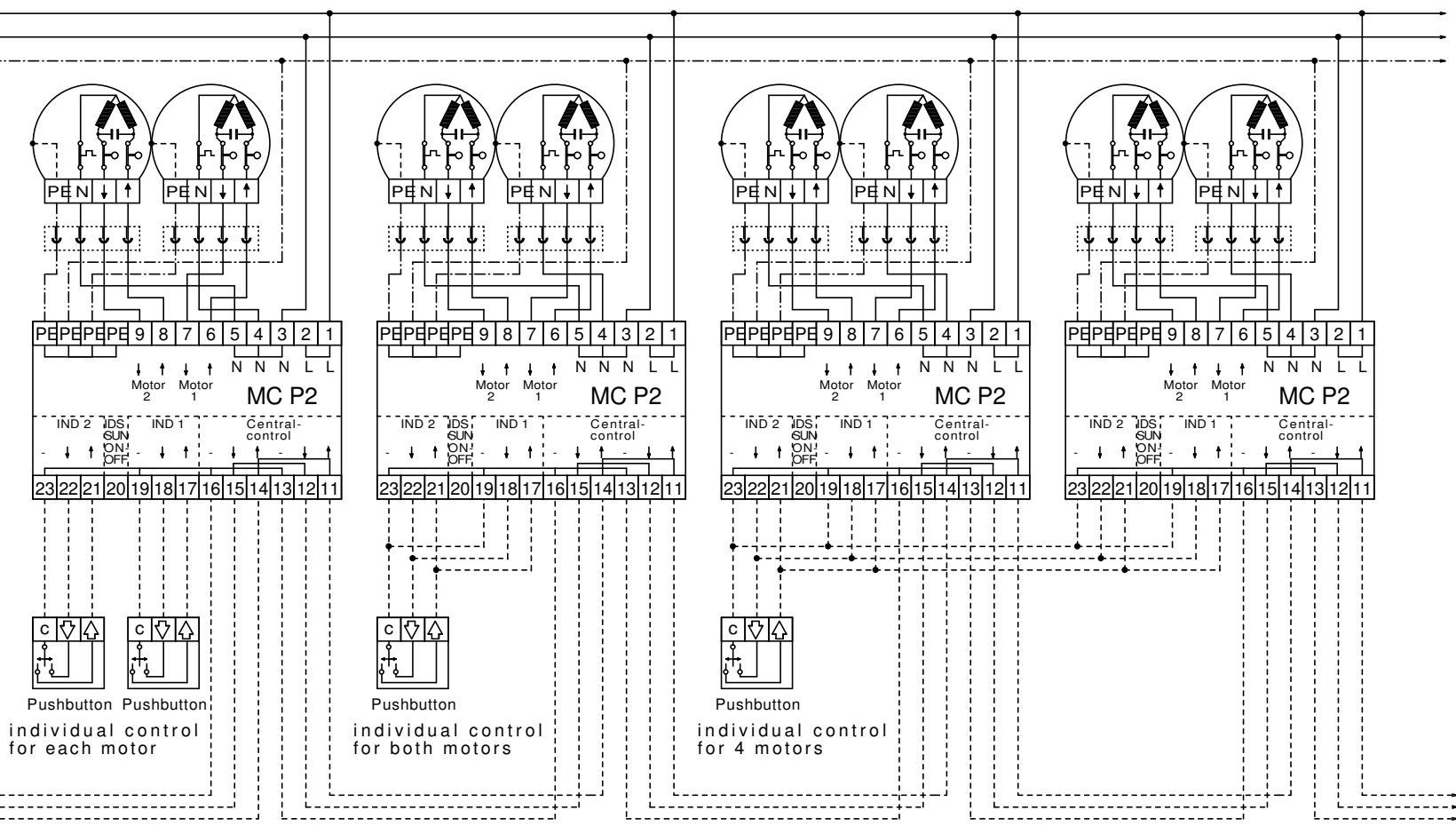
- sensitivity setup rainsensor:
- low sensitivity:
wire strap RD terminal 2 + 3 + 4
 - normal sensitivity:
wire strap RD terminal 2 + 4
 - high sensitivity:
wire strap RD terminal 2 + 3
 - very high sensitivity:
RD without wire strap

Printing errors and details are subject to change without notification.

Kunde:	Costumer:	Objekt:	Object:
		Uni 22 with MC P2	
Kommission:	Reg.No.:	Datum:	Date:
		28.10.10	
Geprüft:	Check by:	Erstellt:	Draughtsman:
		M.Sieben	
		Blatt Nr.:	Blattanzahl:
		1	3
		Sheet No.:	Total:

Vestamatic[®]
Vestamatic GmbH
Dohrweg 27
D-41066 Mönchengladbach
Tel.: 02161/29 408-0
Fax : 02161/29 408-20

L1
N
PE
Supply 230V~



to further MC P2

from sheet no. 1

C
DOWN
UP

central command

Pushbutton Pushbutton
individual control
for each motor

Pushbutton
individual control
for both motors

Pushbutton
individual control
for 4 motors

example for circuit 1 and 2

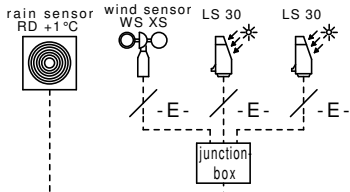
230V wire

low voltage wire

Printing errors and details are subject to change without notification.

Kunde:	Costumer:	Objekt:	Object:
		Uni 22 with MC P2	
Kommission:	Reg.No.:	Datum:	Date:
		28.10.10	
Geprüft:	Check by:	Erstellt:	Draughtsman:
		M.Sieben	
		Blatt Nr.:	Blattanzahl:
		2	3
		Sheet No.:	Total:

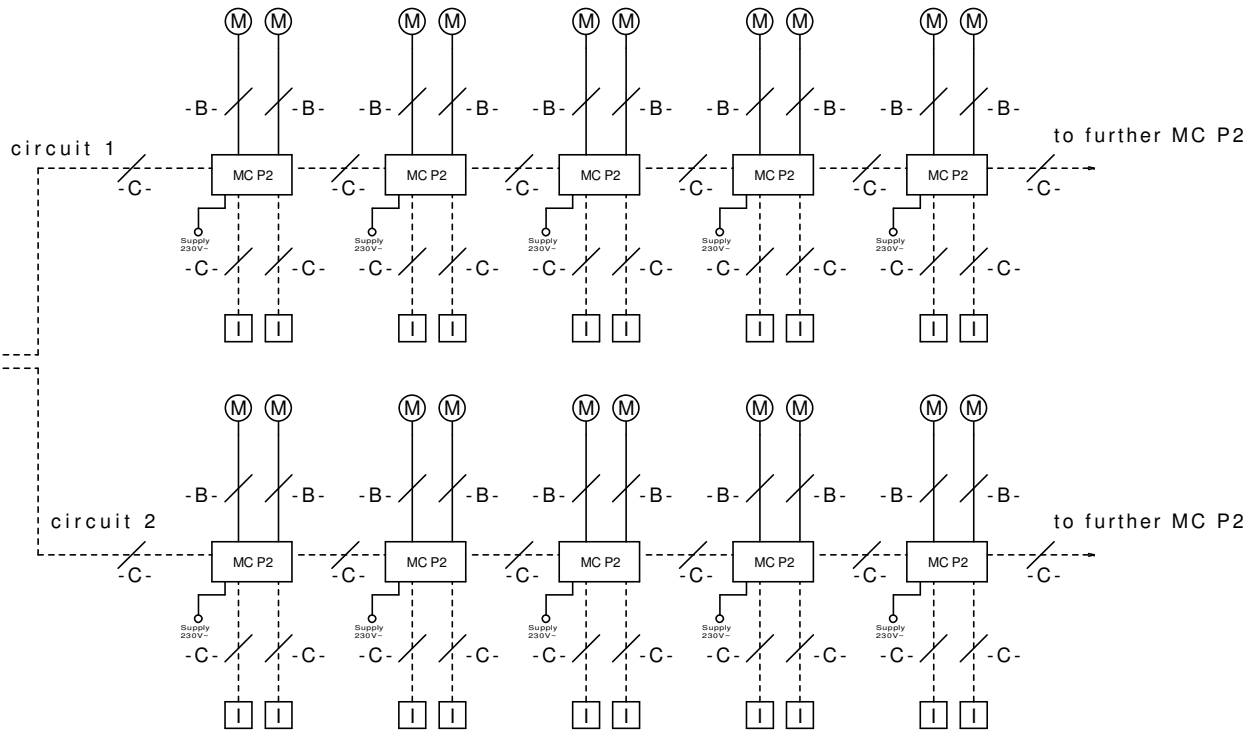
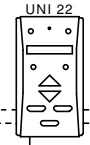
Vestamatic[®]
Vestamatic GmbH
Dohrweg 27
D-41066 Mönchengladbach
Tel.: 02161/29 408-0
Fax.: 02161/29 408-20



max. cable length UNI to the sensors: 100m

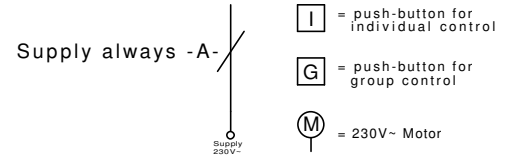
max. cable length UNI to the first MC P2: 100m

max. cable length from the first MC P2 to the last MC P2: 500m



- cable type A: NYM 3 x 1,5 mm²
- cable type B: Faber 05 RN-F 4G0,75
- cable type C: JY(ST)Y 4x2x0,8
- cable type D: YR 4 x 0,34 mm²
- cable type E: YR 2 x 0,34 mm²

> 5m cable is included in delivery of the sensors



230V wire
low voltage wire

Printing errors and details are subject to change without notification.

Kunde:	Costumer:	Objekt:	Object:
Kommission:		Reg.No.:	Datum:
Geprüft:		Check by:	Erstellt:
Date:		Verzeichnis:	File:
Blatt Nr.:		3	Blattanzahl:
Sheet No.:		3	Total:

Vestamatic[®]
Vestamatic GmbH
Dohrweg 27
D-41066 Mönchengladbach
Tel.: 02161/29 408-0
Fax : 02161/29 408-20

Uni 22 with MC P2

28.10.10

M.Sieben

3

3